



# FOOTBALL

INDOOR / OUTDOOR ATHLETIC EQUIPMENT



DESIGNED TO PERFORM.  
MANUFACTURED TO LAST.™



2 0 2 0

## MAX-1™ Aluminum Football Goal Posts

All aluminum goal posts available in high school and collegiate official sizes.

- 6 $\frac{5}{8}$ " crossbar and gooseneck available with 6' or 8' offset
- 4" uprights available in 20' or 30' heights
- 30' uprights are two-piece (Single-piece available upon request)
- Adjustable in two directions ensures crossbar and uprights are level and plumb
- Permanent/semi-permanent or adjustable leveling plate installation
- Ground sleeves for semi-permanent installation sold separately, see page 47

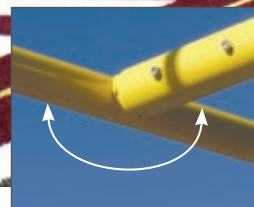
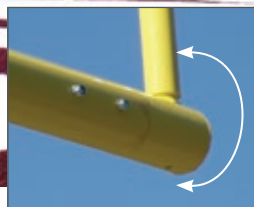
Call for freight quote.

8' offset perfect for multi-purpose fields can be used with soccer goals SGP-600AX, SGP-400, SGP-760, and CC24S.

White or Pro Yellow powder coat options. Specify post color when ordering.



3 Year Limited Warranty



Adjustable in two directions

	Offset	Uprights	Weight	Semi-Permanent / Permanent Item #	Price	Weight	Leveling Plate Item #	Price
High School 23' 4" wide	6'	20'	920 lbs	FBGP-520XX	\$8,405 PR	920 lbs	FBGP-420XX	\$10,087 PR
	6'	30'	CALL	FBGP-530XX	\$8,877 PR	CALL	FBGP-430XX	\$10,425 PR
	8'	20'	1,086 lbs	FBGP-820XX	\$8,651 PR	940 lbs	FBGP-920XX	\$10,476 PR
	8'	30'	CALL	FBGP-830XX	\$9,123 PR	CALL	FBGP-930XX	\$10,814 PR
Collegiate 18' 6" wide	6'	20'	860 lbs	FBGP-520CXX	\$8,293 PR	900 lbs	FBGP-420CXX	\$10,231 PR
	6'	30'	CALL	FBGP-530CXX	\$8,765 PR	CALL	FBGP-430CXX	\$10,569 PR
	8'	20'	880 lbs	FBGP-820CXX	\$8,539 PR	880 lbs	FBGP-920CXX	\$10,313 PR
	8'	30'	CALL	FBGP-830CXX	\$9,011 PR	CALL	FBGP-930CXX	\$10,651 PR

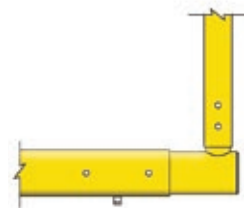
## MAX-1™ Expandable Crossbars

Telescoping design adjusts crossbar width for official use at 23'4" (high school) and 18'6" (collegiate). Anti-rotation feature holds uprights in place allowing adjustment by one person.

3 Year Limited Warranty



18'6"



23'4"



	Offset	Uprights	Weight	Semi-Permanent / Permanent Item #	Price	Weight	Leveling Plate Item #	Price
Expandable 18' 6" - 23' 4" wide	6'	20'	900 lbs	FBGP-520AXXX	\$9,751 PR	940 lbs	FBGP-420AXXX	\$11,208 PR
	8'	20'	920 lbs	FBGP-820AXXX	\$9,999 PR	960 lbs	FBGP-920AXXX	\$11,604 PR





## Steel Football Goal Posts

Steel goal posts available in high school and collegiate official sizes.

- 4½" with 5' offset or 5⅝" with 6' offset models
- 2⅜" aluminum uprights, steel gooseneck and crossbar
- Adjustable in two directions ensures crossbar and uprights are level and plumb
- Permanent/semi-permanent or adjustable leveling plate installation
- Ground sleeves for semi-permanent installation sold separately, see page 47

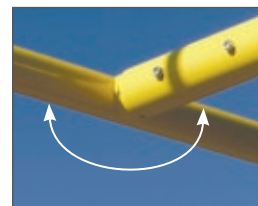
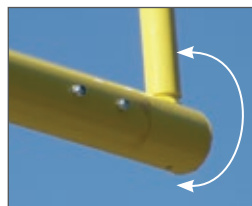
White or Pro Yellow powder coat options. Call for freight quote.



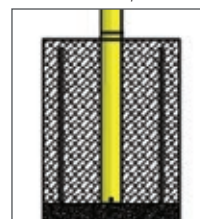
3 Year Limited Warranty



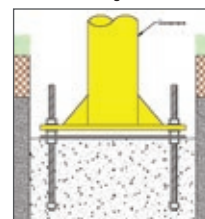
Adjustable in two directions



Semi-Permanent / Permanent



Leveling Plate



	Offset	Uprights	Color	Gooseneck	Semi-Permanent / Permanent			Leveling Plate		
					Weight	Item #	Price	Weight	Item #	Price
High School 23' 4" wide	5'	20'	Yellow	4½"	1,154 lbs	FBGP-620YW	\$4,830 PR	1,154 lbs	FBGP-600YW	\$5,954 PR
	5'	20'	White	4½"	1,084 lbs	FBGP-620	\$4,830 PR	1,080 lbs	FBGP-600	\$5,954 PR
	6'	20'	Yellow	5⅝"	1,200 lbs	FBGP-720YW	\$7,077 PR	1,200 lbs	FBGP-700YW	\$7,865 PR
	6'	20'	White	5⅝"	1,220 lbs	FBGP-720	\$7,077 PR	1,200 lbs	FBGP-700	\$7,865 PR
Collegiate 18' 6" wide	6'	20'	Yellow	5⅝"	1,100 lbs	FBGP-720XCW	\$6,504 PR	1,100 lbs	FBGP-700CW	\$7,102 PR
	6'	20'	White	5⅝"	1,140 lbs	FBGP-720C	\$6,504 PR	1,120 lbs	FBGP-700C	\$7,102 PR



## FieldPro™ Football Net System

Keep field goals and extra point kicks away from spectators and inside the field. Easy-to-use pulley system raises/lowers net!

- (2) 6 $\frac{5}{8}$ " heavy-walled aluminum natural finish uprights, ground sleeves, and covers
- #36 knotted black nylon net with 3 $\frac{1}{2}$ " sq. mesh
- Pulley system and corrosion-resistant hardware included

*Standard upright color is natural finish. Custom colors available upon request for additional charge. Freight quote required.*

\* Limited Warranties



<b>FNFB-30</b>	40'W x 30'H	\$4,770 EA	CALL
<b>FNFB-40</b>	40'W x 40'H	\$7,434 EA	CALL

\* System: 3 Year Limited Warranty, Net: 1 Year Limited Warranty



UConn's Shenkman Training Center

## Stationary Ceiling Suspended Football Goal Post

Lightweight aluminum goal suspends directly beneath building structure. Great solution for indoor practice facilities!

- 6 $\frac{5}{8}$ " crossbar is official collegiate size at 18'6" wide
- 4" uprights available in 20' or 30' heights
- Crossbar leveling feature and suspension hardware included

*White or Pro Yellow powder coat options. Specify post color when ordering. Call for freight quote.*

3 Year Limited Warranty



<b>CSGP-1XX</b>	30' Uprights	Call for Pricing
<b>CSGP-3XX</b>	20' Uprights	Call for Pricing

## Retractable Motorized Ceiling Suspended Football Goal Post

Lightweight aluminum goal suspends directly beneath building structure and lowers/raises via 1 HP electric hoist system. Great solution for indoor practice facilities!

- 6 $\frac{5}{8}$ " crossbar is official collegiate size at 18'6" wide
- 4" uprights available in 20' or 30' heights
- Crossbar leveling feature and suspension hardware included

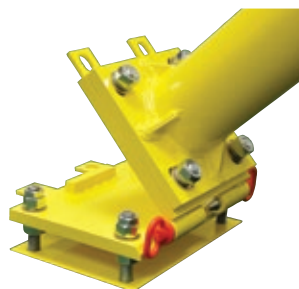
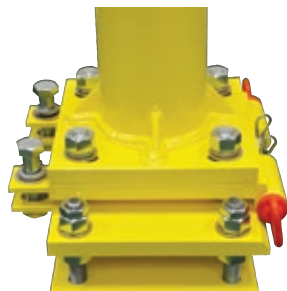
*White or Pro Yellow powder coat options. Specify post color when ordering. Call for freight quote.*

3 Year Limited Warranty



<b>CSGP-2XX</b>	30' Uprights	Call for Pricing
<b>CSGP-4XX</b>	20' Uprights	Call for Pricing





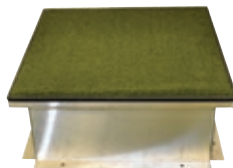
## Football Hinge Kit

Allows any surface-mounted MAX-1™ football goal to be lowered and dismantled from ground level by a maintenance crew. Ideal for multi-purpose facilities!

- Opposing pull pins offer easy separation of hinge plates
- Required access frame and cover (FBGPAF-2) sold separately

3 Year Limited Warranty  

**FBHG-1** \$810 EA 60 lbs



## Access Frames and Covers

For use with semi-permanent goals requiring removal from grass or turf fields.

- Aluminum, pressure-treated plywood, and artificial turf design
- 2 split panels (when goal installed) and 2 full panels (when goal removed)
- 2 frames and 4 turf covered plates included
- Available in 2 sizes:  
18" x 18" x 6½" (FBGPAF-1), for goals with leveling plates.  
26" x 26" x 10" (FBGPAF-2), only used with Hinge Kit (FBHG-1) on MAX-1 goals.

3 Year Limited Warranty  

**FBGPAF-1** \$1,444 PR 60 lbs

**FBGPAF-2** \$1,665 PR 60 lbs



## Soccer/Football Anchor Kit (for SGP-600AX)

Fastens soccer goal rear crossbar to football goal gooseneck.

3 Year Limited Warranty 

**SFGA-6** 6⅝" \$145 KIT 10 lbs

**SFGA-5** 5⅞" \$157 KIT 10 lbs

**SFGA-4** 4½" \$168 KIT 10 lbs



## Wind Streamers

(4) 42"L x 4"W streamers with grommets and mounting hardware.

3 Year Limited Warranty 

**WS-42** \$31 SET OF 4 2 lbs



## Ground Sleeves with Height Adjusters

Adjustable and easy to align.

3 Year Limited Warranty  

**FBGPGS-8** For MAX-1™ Post (6⅝") \$1,288 PR 300 lbs

**FBGPGS-6** For Steel Post (5⅞") \$1,107 PR 275 lbs

**FBGPGS-5** For Steel Post (4½") \$996 PR 250 lbs



## Standard Ground Sleeves

Allows for semi-permanent installation.

3 Year Limited Warranty  

**FBSLV8** For MAX-1™ Post (6⅝") \$1,007 PR 250 lbs

**FBSLV6** For Steel Post (5⅞") \$973 PR 225 lbs

**FBSLV5** For Steel Post (4½") \$885 PR 114 lbs





## Pro Style Protector Pad

- 6" thick x 6' tall
- 14 oz. thick vinyl

- Hook-and-loop closure

*Specify pad color when ordering. Made to order. Extended lead time.*

1 Year Limited Warranty



PPP-500	4½" pole	\$919 PR	35 lbs
PPP-700	5⅝" pole	\$987 PR	40 lbs
PPP-800	6⅝" pole	\$1,224 PR	45 lbs

### PAD COLORS



**Custom Graphics Available For Additional Charge**



Single-Color Lettering



Multi-Color Lettering



Multi-Color Lettering  
with Graphics



Multi-Color Lettering  
with Graphics

## Football Post Padding Customization

Choose from single color to full color customization on your post padding. *Extended lead time.*

**JSG-FPP** Multi-color lettering and graphics **\$222 PER PAD**



## Portable Press Box

Sturdy press box ideal for coaching, filming, and press media.

- All aluminum design with weather-resistant canvas top
- Bench moves forward and backward
- 16" pneumatic wheels (2 lockable and 2 swivel)
- Canvas enclosure for inclement weather and tow kit sold separately
- 7'L x 4'W x 10'6"H

*Specify canvas top color when ordering. Call for freight quote.*

3 Year Limited Warranty



PPB-5	Portable Press Box	\$15,230 EA	1,380 lbs
PPB-SC	Side Curtains/Enclosure	\$1,739 EA	50 lbs
PPB-TOW	Tow Bar/Kit	\$573 EA	50 lbs

### CANVAS TOP COLORS

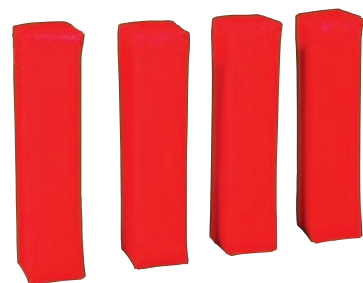


## Foldable Sideline Markers

Self-standing markers with weighted bottoms and numerals on both sides. Stores flat! Markers: 15"H x 15"W x 13"D Numbers: 13"H

1 Year Limited Warranty

FBWSM	11 Piece Set	\$454 SET	32 lbs
-------	--------------	-----------	--------



## Free Standing Pylons

Self-standing end zone pylon with weighted bottom. Anchorless!

- 4"L x 4"W x 18"H

1 Year Limited Warranty

FBPYLN	4 piece	\$48 SET	13 lbs
--------	---------	----------	--------



## Chain Sets

Padded bright orange targets with plated chain and swivel hooks.

1 Year Limited Warranty

8' High			
FCS-8	\$371 SET	19 lbs	
7' High			
FCS-7	\$265 SET	15 lbs	

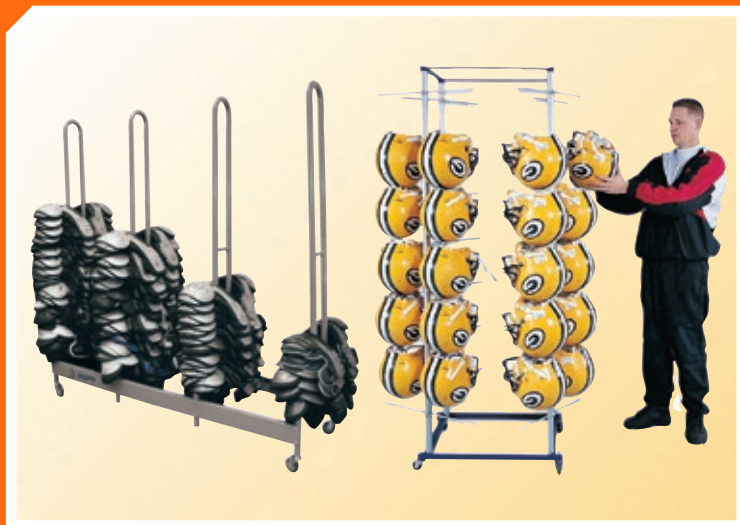
## Flip Down Indicator

Completely padded indicator with durable flip down numbers.

1 Year Limited Warranty

FFD-10	\$267 EA	12 lbs
--------	----------	--------





## Football Equipment Storage Rack Package

- 1 StackMaster™ Deluxe Shoulder Pad Rack (SP4)
- 1 StackMaster™ Helmet Rack (H-1)

3 Year Limited Warranty

FRP-2

\$525 PKG

128 lbs

# STACKMASTER™



## StackMaster™ Shoulder Pad Rack

- Stores up to 42 shoulder pads
- Steel frame with non-marking swivel wheels
- 2'W x 6'6"H

3 Year Limited Warranty

SP-2 \$255 EA 37 lbs

## StackMaster™ Deluxe Shoulder Pad Rack



- Stores up to 60-80 shoulder pads
- Steel frame with non-marking swivel wheels
- Removable transport handle
- 60"L x 24"W x 70"H

3 Year Limited Warranty

SP4 \$325 EA 53 lbs



## StackMaster™ Helmet Rack

- Stores up to 56 helmets
- Steel frame with non-marking swivel wheels
- 2'6"W x 6'3"H

3 Year Limited Warranty

H-1 \$295 EA 66 lbs

## StackMaster™ Deluxe Helmet Rack



- Stores up to 60 helmets
- Steel frame with non-marking swivel wheels
- 61"L x 24"W x 64"H

3 Year Limited Warranty

FHC-1 \$360 EA 104 lbs





## Lowdown Linemen Chute

Heavy-duty chute for training linemen and backers to stay low. Great for running blocking schemes and trap drills.

- Steel frame on 12" pneumatic swivel wheels
- 42" to 66" height adjustment with telescopic legs
- Black mesh screen on lower frame is chain suspended and padded

3 Year Limited Warranty



<b>FBLC-20</b>	20'L x 6'W	\$3,500 EA	575 lbs
<b>FBLC-30</b>	30'L x 6'W	\$4,111 EA	690 lbs



## Linemen Chute

Teach the basics of coming off the ball low and driving upward.

- Steel frame with pin-stop height adjustment
- Attach multiple chutes to replicate entire line
- 4'L x 5'W x 40"H to 50"H

3 Year Limited Warranty

<b>FBLMCH</b>	\$180 EA	47 lbs
---------------	----------	--------



## Professional Portable Kicking Cage

Heavy-duty kicking cage with knotless net contains balls for warm-up exercises.

- Galvanized steel frame
- Folds down for convenient storage
- Carry bag included
- 48"W x 86"H x 48"D

\* Limited Warranties

<b>PKC-1</b>	Cage/Net	\$544 EA	39 lbs
<b>PKC-1N</b>	Net	\$151 EA	5 lbs



## Portable Kicking Cage

- 1 1/8" frame with 26 lb. weighted base
- Durable slip-on net included
- 48"W x 6'6"H

\* Limited Warranties

<b>PK-64</b>	\$196 EA	31 lbs
--------------	----------	--------

\* Cage: 3 Year Limited Warranty, Net: 1 Year Limited Warranty



## Football Training Package

- Linemen Chute (FBLMCH)
- High Stepper Agility Trainer (FBHSTP)
- Portable Kicking Cage (PK-64)

3 Year Limited Warranty

FBTP-3

\$553 PKG

123 lbs

Round

Curved

Step Over



### Round Stand-Up Blocking Dummy

- Self-standing with dense foam core
- Double reinforced 18 oz. vinyl cover
- Double web belt handles for sure grip

*Specify vinyl color when ordering. Call for freight quote.*

1 Year Limited Warranty

FBSUD38	14" dia. x 38"H	\$165 EA	13 lbs
FBSUD42	14" dia. x 42"H	\$179 EA	16 lbs
FBSUD48	13" dia. x 48"H	\$188 EA	18 lbs

### Curved Pro Body Shield

- Pre-curved 4" thick dense foam core
- Double reinforced 18 oz. vinyl cover
- Double web belt handles for sure grip

*Specify vinyl color when ordering. Call for freight quote.*

FBPRCV

24"H x 16"L x 4"W

\$80 EA

4 lbs

### Step Over Agility Dummy

- Dense foam core
- Double reinforced 18 oz. vinyl cover
- Back side handles for stand up practice

*Specify vinyl color when ordering. Call for freight quote.*

FBST8

48"L x 8"W x 17"D

\$171 EA

11 lbs

FBST12

48"L x 12"W x 17"D

\$214 EA

13 lbs

#### VINYL COLORS



### High Stepper Agility Trainer

- Five adjustable heights to increase leg lift
- Steel tube frame with suspended 16 square rope grid
- Frame safely located outside running grid area
- 20'L x 6'W

3 Year Limited Warranty

FBHSTP \$220 EA 45 lbs



Shown with cone pad

### SackBack Tackle Sled

- Durable steel frame with 100 lb. impact-resistant foam
  - 18 oz. vinyl cover
  - Round, cone, and attack style models
- Specify vinyl color and model style when ordering. Call for freight quote.*

1 Year Limited Warranty



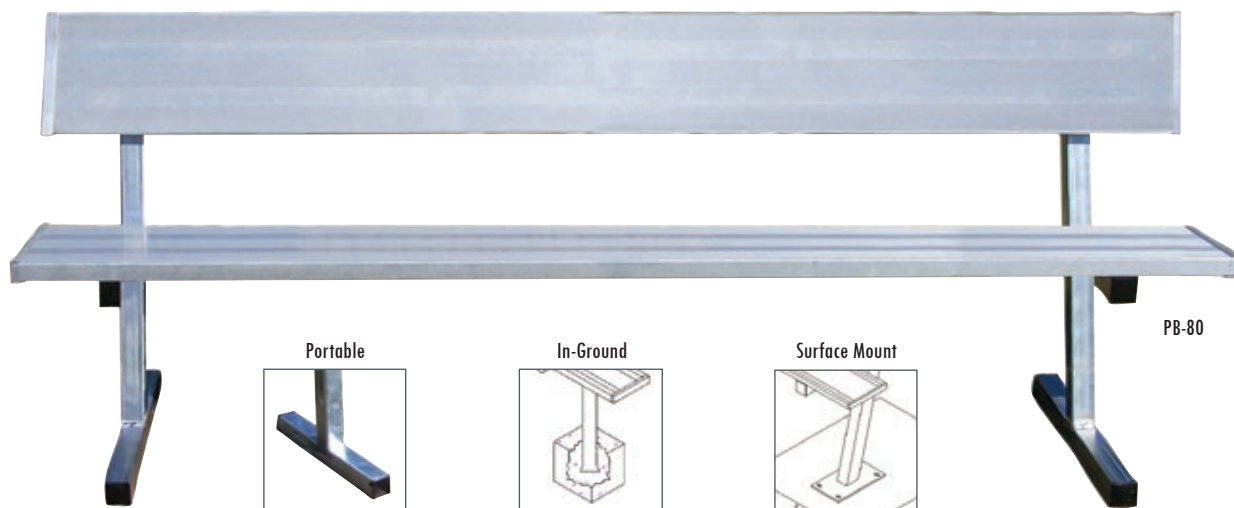
TKSLDV Varsity \$1,684 EA 225 lbs

TKSLDP Pro \$1,913 EA 295 lbs



### Snap Attack Football Machine

*Maximize time on the most difficult to practice phases of the game. See page 99 for details about this product.*

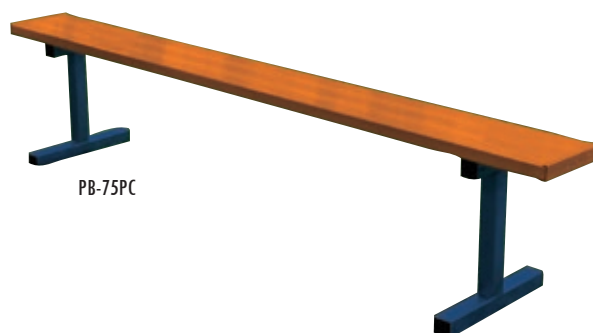


PB-80

## Player Bench

Sturdy rust-resistant aluminum bench for athletic fields, public parks, and sport complexes.

- 10" wide non-skid seat planks
  - Heavy-duty rust-resistant steel legs
  - Portable, in-ground, or surface mount installation
  - Floor protection kit (PSS-4FT) for indoor use sold separately
- Specify plank and leg colors when ordering powder coat option.*



PB-75PC

3 Year Limited Warranty



	Length	Weight	Portable	In-Ground	Surface	Natural Finish Price	Portable	In-Ground	Surface	Powder Coat Price
w/ Seat Back	7½'	60 lbs	PB-80	PB-80PI	PB-80SM	\$350 EA	PB-80PC	PB-80PIPC	PB-80SMPC	\$440 EA
	15'	100 lbs	PB-20	PB-20PI	PB-20SM	\$545 EA	PB-20PC	PB-20PIPC	PB-20SMPC	\$663 EA
	21'	135 lbs	PB-10	PB-10PI	PB-10SM	\$690 EA	PB-10PC	PB-10PIPC	PB-10SMPC	\$950 EA
	27'	175 lbs	PB-90	PB-90PI	PB-90SM	\$808 EA	PB-90PC	PB-90PIPC	PB-90SMPC	\$970 EA
w/o Seat Back	7½'	33 lbs	PB-75	PB-75PI	PB-75SM	\$248 EA	PB-75PC	PB-75PIPC	PB-75SMPC	\$305 EA
	15'	57 lbs	PB-15	PB-15PI	PB-15SM	\$330 EA	PB-15PC	PB-15PIPC	PB-15SMPC	\$445 EA
	21'	79 lbs	PB-5	PB-5PI	PB-5SM	\$460 EA	PB-5PC	PB-5PIPC	PB-5SMPC	\$525 EA
	27'	101 lbs	PB-95	PB-95PI	PB-95SM	\$570 EA	PB-95PC	PB-95PIPC	PB-95SMPC	\$665 EA

## 169 Possible Color Combinations



## Protect Indoor Surfaces



## Floor Protection Kit

- Prevents floor marking
- 4 rubber feet and self-threading screws included

3 Year Limited Warranty

PSS-4FT

\$32 KIT

2 lbs





DPB50PC

## Courtside Benches

Portable 5' aluminum benches for courtside viewing.

- Durable and rust-resistant
  - Single or double seat plank models
  - Floor protection kit (PSS-4FT) for indoor use sold separately
- Specify plank and leg colors when ordering powder coat option.*

3 Year Limited Warranty

<b>PB40</b>	Natural - w/ Back	\$279 EA	50 lbs
<b>PB40PC</b>	Powder coat -w/ Back	\$310 EA	50 lbs
<b>DPB50</b>	Natural	\$339 EA	55 lbs
<b>DPB50PC</b>	Powder coat	\$399 EA	55 lbs



PBS-20

## Player Bench with Shelf

Durable rust-resistant aluminum bench with equipment shelf.

- 20" wide non-skid shelf for helmets, gloves, and other items
- Non-skid seat planks and rust-resistant steel legs

*Specify plank and leg colors when ordering powder coat option.*

3 Year Limited Warranty



Length	Weight	Natural Finish	Price	Powder Coat	Price
7½'	95 lbs	<b>PBS-80</b>	\$630 EA	<b>PBS-80PC</b>	\$640 EA
15'	130 lbs	<b>PBS-20</b>	\$900 EA	<b>PBS-20PC</b>	\$1,060 EA
21'	185 lbs	<b>PBS-10</b>	\$1,190 EA	<b>PBS-10PC</b>	\$1,460 EA
27'	200 lbs	<b>PBS-90</b>	\$1,889 EA	<b>PBS-90PC</b>	\$2,299 EA



ST75PC

## Scorer Table with Bench

Heavy-duty and rust-resistant. Ideal for any outdoor sport.

- 10" wide non-skid seat planks and rust-resistant steel legs
- Tabletop - 7½"L x 19"W

*Specify plank and leg colors when ordering powder coat option.*

3 Year Limited Warranty



Length	Weight	Natural Finish	Price	Powder Coat	Price
7½'	90 lbs	<b>ST75</b>	\$575 EA	<b>ST75PC</b>	\$691 EA



PWB-15PC

## Wall-Mounted Player Bench

Rust-resistant aluminum bench ideal for locker rooms, aquatic centers, and outdoor applications.

- 10" wide non-skid seat planks
- Corrosion-resistant understructure

*Understructure mounts to wall with stainless steel hardware (provided by local installer). Specify plank and understructure colors when ordering.*

Length	Weight	Natural Finish	Price	Powder Coat	Price
7½'	20 lbs	<b>PBW-75</b>	\$340 EA	<b>PBW-75PC</b>	\$389 EA
15'	40 lbs	<b>PBW-15</b>	\$400 EA	<b>PBW-15PC</b>	\$470 EA
21'	60 lbs	<b>PBW-5</b>	\$525 EA	<b>PBW-5PC</b>	\$635 EA
27'	80 lbs	<b>PBW-95</b>	\$595 EA	<b>PBW-95PC</b>	\$744 EA

3 Year Limited Warranty







BLCH-4AL

## All Aluminum Bleachers

Lightweight all aluminum bleachers are perfect for outdoor parks and fields.

- 10" wide non-skid seat planks with sturdy understructure
- Single or double foot plank models
- Indoor conversion kit (BLCHICK34) for indoor use sold separately

*4 row bleacher does not exceed 30" in height. Guard rails may not be needed (check local codes). Specify plank and leg colors when ordering powder coat option.*

3 Year Limited Warranty



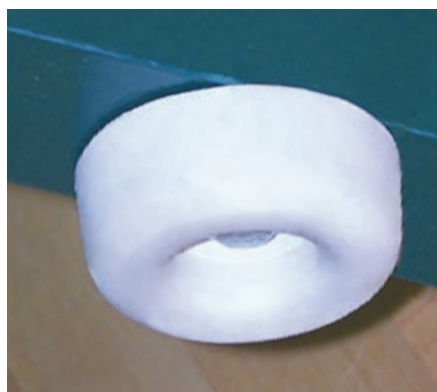
BLDP-4AL





	Rows	Length	Seats	Weight	Natural Finish	Price	Powder Coat	Price
Single Foot Plank Bleacher (Standard)	3	15'	30	240 lbs	BLCH-3AL	\$1,423 EA	BLCH-3ALPC	\$1,526 EA
		21'	42	340 lbs	BLCH-321AL	\$1,694 EA	BLCH-321ALPC	\$1,895 EA
		27'	54	440 lbs	BLCH-327AL	\$2,353 EA	BLCH-327ALPC	\$2,568 EA
	4	15'	40	320 lbs	BLCH-4AL	\$1,870 EA	BLCH-4ALPC	\$1,855 EA
		21'	52	440 lbs	BLCH-421AL	\$2,400 EA	BLCH-421ALPC	\$2,459 EA
		27'	70	560 lbs	BLCH-427AL	\$2,827 EA	BLCH-427ALPC	\$3,213 EA
Double Foot Plank Bleacher (Preferred)	3	15'	30	290 lbs	BLDP-3AL	\$1,495 EA	BLDP-3ALPC	\$1,862 EA
		21'	42	415 lbs	BLDP-321AL	\$1,845 EA	BLDP-321ALPC	\$2,300 EA
		27'	54	540 lbs	BLDP-327AL	\$2,476 EA	BLDP-327ALPC	\$2,947 EA
	4	15'	40	395 lbs	BLDP-4AL	\$2,307 EA	BLDP-4ALPC	\$2,697 EA
		21'	52	550 lbs	BLDP-421AL	\$2,770 EA	BLDP-421ALPC	\$3,237 EA
		27'	70	705 lbs	BLDP-427AL	\$3,308 EA	BLDP-427ALPC	\$3,751 EA

## 169 Possible Color Combinations



### Indoor Conversion Kit

Protect floor surfaces with this outdoor to indoor bleacher conversion kit.

- 12 rubber pad protectors to prevent floor marking
- 7½' Bleacher - Requires 1 kit
- 15'/21' Bleacher - Requires 2 kits
- 27' Bleacher - Requires 3 kits

For 2, 3, and 4 row bleachers at lengths of 7½', 15', 21', and 27'.

3 Year Limited Warranty



BLCHICK34

\$56 SET

4 lbs





BTDP-3



BTBB-3PC

## Back-to-Back Bleachers

Place between adjoining fields or indoor courts for spectator viewing from both sides of the bleacher.

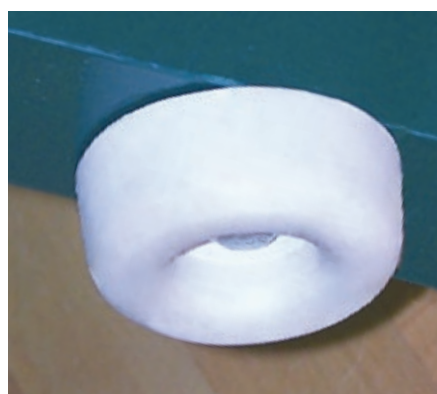
- Lightweight 10" wide all aluminum seat planks and sturdy understructure
  - Single or double foot plank models
  - Indoor conversion kit (BLCHICK34) for indoor use sold separately
- Specify plank and leg colors when ordering powder coat option.*

3 Year Limited Warranty



	Rows	Length	Seats	Weight	Natural Finish	Price	Powder Coat	Price
Single Foot Plank Bleacher (Standard)	3	7½'	25	299 lbs	BTBB-375	\$2,087 EA	BTBB-375PC	\$2,276 EA
		15'	50	540 lbs	BTBB-3	\$2,576 EA	BTBB-3PC	\$2,764 EA
		21'	72	668 lbs	BTBB-321	\$3,725 EA	BTBB-321PC	\$3,725 EA
Double Foot Plank Bleacher (Preferred)	3	7½'	25	363 lbs	BTDP-375	\$2,331 EA	BTDP-375PC	\$2,664 EA
		15'	50	670 lbs	BTDP-3	\$2,864 EA	BTDP-3PC	\$3,219 EA
		21'	72	903 lbs	BTDP-321	\$3,553 EA	BTDP-321PC	\$3,940 EA

### POWDER COAT COLORS



## Indoor Conversion Kit

Protect floor surfaces with this outdoor to indoor bleacher conversion kit.

- 12 rubber pad protectors to prevent floor marking
- 7½' Bleacher - Requires 1 kit
- 15'/21' Bleacher - Requires 2 kits
- 27' Bleacher - Requires 3 kits

*For 2, 3, and 4 row bleachers at lengths of 7½', 15', 21', and 27'.*

3 Year Limited Warranty



BLCHICK34

\$56 SET

4 lbs



BLCH-3

## Standard Outdoor Bleacher

Heavy-duty outdoor bleacher with dual braces and rear stabilizing bar for increased strength.

- 10" wide aluminum non-skid seat planks
  - Galvanized steel understructure
- 4 row bleacher does not exceed 30" in height. Guard rails may not be needed (check local codes). Specify plank and leg colors when ordering powder coat option.

Rows	Length	Seats	Weight	Natural Finish	Price	Powder Coat	Price
3	15'	30	310 lbs	BLCH-3	\$1,397 EA	BLCH-3PC	\$1,450 EA
	21'	42	425 lbs	BLCH-321	\$1,770 EA	BLCH-321PC	\$2,040 EA
	27'	54	545 lbs	BLCH-327	\$2,211 EA	BLCH-327PC	\$2,504 EA
4	15'	40	390 lbs	BLCH-4	\$1,959 EA	BLCH-4PC	\$2,265 EA
	21'	52	520 lbs	BLCH-421	\$2,430 EA	BLCH-421PC	\$2,648 EA
	27'	70	650 lbs	BLCH-427	\$2,768 EA	BLCH-427PC	\$3,264 EA

3 Year Limited Warranty



## Bleacher/Bench Plank Pad

Create comfortable bleacher seating for players and spectators.

- Straps buckle under plank for easy installation
- 7½' Bleacher - Requires 1 pad per row
- 15' Bleacher - Requires 2 pads per row
- 21' Bleacher - Requires 3 pads per row
- 7'L x 10"W x 1⅜"H

For bleachers at lengths of 7½', 15', and 21'. Specify pad color when ordering (Pink, Lime, Kelly Green, Light Blue, Royal Blue, Forest Green, Yellow, Orange, Dark Purple, Burgundy, Beige, Brown, White, Navy Blue, Red, Gray, Charcoal or Black). Call for freight quote (extended lead time may apply). Custom - non-returnable.

1 Year Limited Warranty



PLKPAD7

\$149 EA 5 lbs



## Bleacher Transport Kit

Transport bleachers from field to field with ease.

- (2) 4"W x 12"H heavy-duty wheels
- Wheels and tongue easily attach and remove
- Fits any angle framed 2, 3, 4, or 5 row bleachers at lengths of 15', 21', and 27' - Vehicle Mounting Kit sold separately

3 Year Limited Warranty



BLCH-TOW4515	15'	\$864 KIT	120 lbs
BLCH-TOW4521	21' - 27'	\$971 KIT	150 lbs
BLCH-TMKIT	Vehicle Mounting Kit	\$254 KIT	60 lbs





BLCH-10GR



BLCH-521ASGRPC

## Enclosed Bleacher

Heavy-duty enclosed bleacher with dual braces and rear stabilizing bar for increased strength.

- 10" wide aluminum non-skid seat planks
- Galvanized steel understructure
- Vertical guardrails or chain-link enclosure
- 5 or 10 row configuration
- Aisle option includes handrail in center of bleacher

*Risers and double foot planks added to bleachers over 30" high for code and safety regulations. Specify plank, understructure, and guardrail colors when ordering powder coat option. Powder coat finish not available on chain-link enclosures or 10 row bleachers. Call for freight quote.*

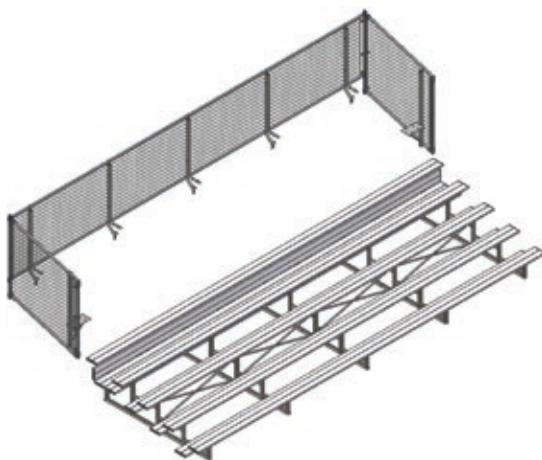
3 Year Limited Warranty



### POWDER COAT COLORS



Enclosure	Rows	Length	Seats	Weight	Natural Finish	Price	Powder Coat	Price
Guard Rail	5	15'	50	1,172 lbs	BLCH-5GR	\$4,885 EA	BLCH-5GRPC	\$5,824 EA
Chain Link		15'	50	1,012 lbs	BLCH-5C	\$4,429 EA	N/A	N/A
Guard Rail		21'	62	1,452 lbs	BLCH-521GR	\$6,000 EA	BLCH-521GRPC	\$7,547 EA
Chain Link		21'	62	1,252 lbs	BLCH-521C	\$5,220 EA	N/A	N/A
Guard Rail w/Aisle		21'	58	1,500 lbs	BLCH-521ASGR	\$7,570 EA	BLCH-521ASGRPC	\$8,948 EA
Guard Rail		27'	80	1,732 lbs	BLCH-527GR	\$8,007 EA	BLCH-527GRPC	\$8,459 EA
Chain Link		27'	80	1,492 lbs	BLCH-527C	\$6,273 EA	N/A	N/A
Guard Rail	10	15'	100	2,500 lbs	BLCH-10GR	\$12,307 EA	N/A	N/A
Guard Rail		21'	140	2,700 lbs	BLCH-1021GR	\$15,285 EA	N/A	N/A
Guard Rail w/Aisle		21'	114	3,000 lbs	BLCH-1021ASGR	\$16,614 EA	N/A	N/A
Guard Rail		27'	170	3,464 lbs	BLCH-1027GR	\$18,774 EA	N/A	N/A
Guard Rail w/Aisle		27'	134	3,700 lbs	BLCH-1027ASGR	\$19,771 EA	N/A	N/A



## Universal Enclosure

Upgrade 5 row bleachers to comply with local safety codes.

- Enclose bleacher seating higher than 30" (fits most bleacher brands)
- Bolts to 5 row bleachers at lengths of 15', 21', and 27'
- Footboard, kickboard, attachment frame, and hardware kit included

3 Year Limited Warranty



BLCH5CUE15	15' - 5 Row	\$2,491 EA	250 lbs
BLCH5CUE21	21' - 5 Row	\$3,124 EA	275 lbs
BLCH5CUE27	27' - 5 Row	\$3,987 EA	300 lbs





DESIGNED TO PERFORM.  
MANUFACTURED TO LAST.™

JAYPRO SPORTS  
IS GOING GREEN 

Jaypro Sports, LLC  
976 Hartford Turnpike, Waterford, CT 06385

P: 800-243-0533      F: 800-988-3363  
info@jaypro.com      www.Jaypro.com