

CORE 2017



CAMPUS CREW





# THE DETAILS

The details applied to our product design, quality and graphics are designed in house and are offered with embroidery, screen printing, specialty washes, and other value added techniques that clearly separate Campus Crew from the majority of like retailers on today's marketplace.



## QUALITY

Our superior quality is in a class of its own from the soft touch to our long lasting fabrics

## DESIGN

Unmatched designs with advanced embroidery and screen printing accents provide endless design options

## TOUCH

Using higher quality fabrics with our exclusive "ECO-WASH" process softens our sueded jersey and fleece like no other





# **LADIES 2017 PROGRAM CORE STOCK**





# CLASSIC T-SHIRT

## STYLE: #L2395

**SIZES:** XS - XL

**CONTENT:**

66% POLYESTER / 29% VISCOSE / 5% ELASTANE

**LEAD TIME:**

(FROM GRAPHIC APPROVAL)

**NEW ORDER:** 4-6 WEEKS

**REPEAT ORDER:** 2-4 WEEKS (CORE ONLY)

**MINIMUMS:** 48 PIECES

**DECORATION:** SCREEN PRINT

**GRAPHIC SHOWN:** #110

### CORE COLOURS



CHARCOAL

WHITE

SOLID  
DARK BLACK

BLACK

ROYAL

DARK NAVY  
(SINGLE DYE)

RED

### BOOKING COLOURS



FOREST

RIDER GREEN

UCLA BLUE

PURPLE

BURGUNDY

CARDINAL

ORANGE

MAROON

GARMENT FITTING MAY VARY FOR EACH INDIVIDUAL - SIZING CHARTS ARE GUIDELINES AND ARE SUBJECT TO SLIGHT VARIATIONS

PRODUCT COLOURS SHOWN WILL VARY DEPENDING ON PRINTING PROCESS OR MONITOR SETTINGS WHEN VIEWING ONLINE

PLEASE REFER TO FINISHED SAMPLES OR SALES REPRESENTATIVE FOR ANY QUESTIONS CONCERNING SIZING AND COLOURS

SIZE CHART	BODY DIMENSIONS	XS	S	M	L	XL	XXL
LADIES	CHEST	30"	32"	34"	36"	38"	41"
	SLEEVE LENGTH	12 ½"	13"	13 ½"	14"	14 ½"	15 ¼"
	BODY LENGTH	25 ½"	26"	26 ½"	27"	27 ½"	28 ¼"



# V-NECK T-SHIRT

## STYLE: #L2920

**SIZES:** XS - XL

### CONTENT:

66% POLYESTER / 29% VISCOSE / 5% ELASTANE

### LEAD TIME:

(FROM GRAPHIC APPROVAL)

**NEW ORDER:** 4-6 WEEKS

**REPEAT ORDER:** 2-4 WEEKS (CORE ONLY)

**MINIMUMS:** 48 PIECES

**DECORATION:** SCREEN PRINT

**GRAPHIC SHOWN:** #205



### CORE COLOURS



CHARCOAL WHITE BLACK ROYAL DARK NAVY RED  
(SINGLE DYE)

### BOOKING COLOURS



SOLID BLACK FOREST RIDER GREEN UCLA BLUE PURPLE BURGUNDY CARDINAL ORANGE MAROON

SIZE CHART	BODY DIMENSIONS	XS	S	M	L	XL	XXL
LADIES	CHEST	30"	32"	34"	36"	38"	41"
	SLEEVE LENGTH	11 1/2"	12"	12 1/2"	13"	13 1/2"	14 1/4"
	BODY LENGTH	26"	26 1/2"	27"	27 1/2"	28"	28 3/4"

GARMENT FITTING MAY VARY FOR EACH INDIVIDUAL - SIZING CHARTS ARE GUIDELINES AND ARE SUBJECT TO SLIGHT VARIATIONS

PRODUCT COLOURS SHOWN WILL VARY DEPENDING ON PRINTING PROCESS OR MONITOR SETTINGS WHEN VIEWING ONLINE

PLEASE REFER TO FINISHED SAMPLES OR SALES REPRESENTATIVE FOR ANY QUESTIONS CONCERNING SIZING AND COLOURS







# NOTCH NECK TEE

STYLE: #L2933

**SIZES:** XS - XL

**CONTENT:**

66% POLYESTER / 29% VISCOSE / 5% ELASTANE

**LEAD TIME:**

(FROM GRAPHIC APPROVAL)

**NEW ORDER:** 4-6 WEEKS

**REPEAT ORDER:** 2-4 WEEKS (CORE ONLY)

**MINIMUMS:** 48 PIECES

**DECORATION:** SCREEN PRINT

**GRAPHIC SHOWN:** #250

## CORE COLOURS



CHARCOAL   WHITE   SOLID DARK BLACK   BLACK   ROYAL   DARK NAVY (SINGLE DYE)   RED

## BOOKING COLOURS



FOREST   RIDER GREEN   UCLA BLUE   PURPLE   BURGUNDY   CARDINAL   ORANGE   MAROON

GARMENT FITTING MAY VARY FOR EACH INDIVIDUAL - SIZING CHARTS ARE GUIDELINES AND ARE SUBJECT TO SLIGHT VARIATIONS

PRODUCT COLOURS SHOWN WILL VARY DEPENDING ON PRINTING PROCESS OR MONITOR SETTINGS WHEN VIEWING ONLINE

PLEASE REFER TO FINISHED SAMPLES OR SALES REPRESENTATIVE FOR ANY QUESTIONS CONCERNING SIZING AND COLOURS

SIZE CHART	BODY DIMENSIONS	XS	S	M	L	XL	XXL
LADIES	CHEST	30"	32"	34"	36"	38"	41"
	SLEEVE LENGTH	12½"	13"	13 ½"	14"	14 ½"	15 ¼"
	BODY LENGTH	25 ½"	26"	26 ½"	27"	27 ½"	28 ¼"





# SLOUCH TANK

## STYLE: #L2942

**SIZES:** XS - XL

**CONTENT:**

66% POLYESTER / 29% VISCOSE / 5% ELASTANE

**LEAD TIME:**

(FROM GRAPHIC APPROVAL)

**NEW ORDER:** 4-6 WEEKS

**REPEAT ORDER:** 2-4 WEEKS (CORE ONLY)

**MINIMUMS:** 48 PIECES

**DECORATION:** SCREEN PRINT

**GRAPHIC SHOWN:** #255



### CORE COLOURS



CHARCOAL

WHITE

SOLID  
DARK BLACK

BLACK

ROYAL

### BOOKING COLOURS



FOREST

RIDER GREEN

UCLA BLUE

PURPLE

BURGUNDY

CARDINAL

ORANGE

MAROON

DARK NAVY  
(SINGLE DYE)

RED

#### SIZE CHART

LADIES

#### BODY DIMENSIONS

	XS	S	M	L	XL
CHEST	31"	33"	35"	37"	39"
ARM HOLE	10"	10 ½"	11"	12 ½"	12"
BODY LENGTH - FRONT	23 ½"	24"	24 ½"	25"	25 ½"
BODY LENGTH - BACK	26	26 ½"	27"	27 ½"	28"

GARMENT FITTING MAY VARY FOR EACH INDIVIDUAL - SIZING CHARTS ARE GUIDELINES AND ARE SUBJECT TO SLIGHT VARIATIONS

PRODUCT COLOURS SHOWN WILL VARY DEPENDING ON PRINTING PROCESS OR MONITOR SETTINGS WHEN VIEWING ONLINE

PLEASE REFER TO FINISHED SAMPLES OR SALES REPRESENTATIVE FOR ANY QUESTIONS CONCERNING SIZING AND COLOURS







# L/S V-NECK TEE

## STYLE: #L2935

**SIZES:** XS - XL

**CONTENT:**

66% POLYESTER / 29% VISCOSE / 5% ELASTANE

**LEAD TIME:**

(FROM GRAPHIC APPROVAL)

**NEW ORDER:** 4-6 WEEKS

**REPEAT ORDER:** 2-4 WEEKS (CORE ONLY)

**MINIMUMS:** 48 PIECES

**DECORATION:** SCREEN PRINT

**GRAPHIC SHOWN:** #273

### CORE COLOURS



### BOOKING COLOURS



GARMENT FITTING MAY VARY FOR EACH INDIVIDUAL - SIZING CHARTS ARE GUIDELINES AND ARE SUBJECT TO SLIGHT VARIATIONS

PRODUCT COLOURS SHOWN WILL VARY DEPENDING ON PRINTING PROCESS OR MONITOR SETTINGS WHEN VIEWING ONLINE

PLEASE REFER TO FINISHED SAMPLES OR SALES REPRESENTATIVE FOR ANY QUESTIONS CONCERNING SIZING AND COLOURS

SIZE CHART	BODY DIMENSIONS	XS	S	M	L	XL	XXL
<b>LADIES</b>	CHEST	30"	32"	34"	36"	38"	41"
	SLEEVE LENGTH	32 ½"	33"	33 ½"	34"	34 ½"	35 ¼"
	BODY LENGTH	24 ½"	25"	25 ½"	26"	26 ½"	27 ¼"



# HIGH NECK HOOD

## STYLE: #L8914

**SIZES:** XS - XL

**CONTENT:**

66% POLYESTER / 29% VISCOSE / 5% ELASTANE

**LEAD TIME:**

(FROM GRAPHIC APPROVAL)

**NEW ORDER:** 4-6 WEEKS

**REPEAT ORDER:** 2-4 WEEKS (CORE ONLY)

**MINIMUMS:** 48 PIECES

**DECORATION:** SCREEN PRINT

**GRAPHIC SHOWN:** #135



### CORE COLOURS



CHARCOAL

BLACK

ROYAL

DARK NAVY  
(SINGLE DYE)

RED

### BOOKING COLOURS



WHITE

SOLID BLACK

FOREST

RIDER GREEN

UCLA BLUE

PURPLE

BURGUNDY

CARDINAL

ORANGE

MAROON

SIZE  
CHART

#### BODY DIMENSIONS

	XS	S	M	L	XL	XXL
<b>CHEST</b>	31"	33"	35"	37"	39"	42"
<b>SLEEVE LENGTH</b>	32"	32 ½"	33"	33 ½"	34"	34 ¾"
<b>BODY LENGTH - FRONT</b>	25"	25 ½"	26"	26 ½"	27"	27 ¾"
<b>BODY LENGTH - BACK</b>	26"	26 ½"	27"	27 ½"	28"	28 ¾"

GARMENT FITTING MAY VARY FOR EACH INDIVIDUAL - SIZING CHARTS ARE GUIDELINES AND ARE SUBJECT TO SLIGHT VARIATIONS

PRODUCT COLOURS SHOWN WILL VARY DEPENDING ON PRINTING PROCESS OR MONITOR SETTINGS WHEN VIEWING ONLINE

PLEASE REFER TO FINISHED SAMPLES OR SALES REPRESENTATIVE FOR ANY QUESTIONS CONCERNING SIZING AND COLOURS





# COLLEGE SHORT

## STYLE: #L2901

**SIZES:** XS - L

**CONTENT:**

95% COTTON / 5% SPANDEX

**LEAD TIME:**

(FROM GRAPHIC APPROVAL)

**NEW ORDER:** 4-6 WEEKS

**REPEAT ORDER:** 2-4 WEEKS (CORE ONLY)

**MINIMUMS:** 48 PIECES

**DECORATION:** SCREEN PRINT

**GRAPHIC SHOWN:** #226

### CORE COLOURS



BLACK



CHARCOAL

### BOOKING COLOURS



FOREST



UCLA BLUE



PURPLE



RED



BLACK



DARK NAVY



ROYAL



CARDINAL



MAROON

GARMENT FITTING MAY VARY FOR EACH INDIVIDUAL - SIZING CHARTS ARE GUIDELINES AND ARE SUBJECT TO SLIGHT VARIATIONS

PRODUCT COLOURS SHOWN WILL VARY DEPENDING ON PRINTING PROCESS OR MONITOR SETTINGS WHEN VIEWING ONLINE

PLEASE REFER TO FINISHED SAMPLES OR SALES REPRESENTATIVE FOR ANY QUESTIONS CONCERNING SIZING AND COLOURS

#### SIZE CHART

#### LADIES

#### BODY DIMENSIONS

	XS	S	M	L	XL
WAIST	25"	27"	29"	31"	34"
HIP	37	39	41	43"	46
INSEAM	3"	3"	3"	3 1/2"	4 1/4"





# ATHLETIC SHORT W/ TRIM

## STYLE: #L2981

**SIZES:** XS - L

**CONTENT:**

100% SUEDED COTTON - TRI BLEND

**LEAD TIME:**

(FROM GRAPHIC APPROVAL)

**NEW ORDER:** 4-6 WEEKS

**REPEAT ORDER:** 2-4 WEEKS (CORE ONLY)

**MINIMUMS:** 48 PIECES

**DECORATION:** SCREEN PRINT

**GRAPHIC SHOWN:** #244



### CORE COLOURS



CHARCOAL

BLACK

ROYAL

DARK NAVY  
(SINGLE DYE)

RED

### BOOKING COLOURS



FOREST

UCLA BLUE

PURPLE

BURGUNDY

CARDINAL

ORANGE

MAROON

#### SIZE CHART

LADIES

#### BODY DIMENSIONS

	XS	S	M	L	XL
WAIST	22 ½"	24 ½"	26 ½"	28 ½"	31 ½"
HIP	36"	38"	40"	42"	45"
INSEAM	3"	3"	3"	3 ½"	4 ¼"

GARMENT FITTING MAY VARY FOR EACH INDIVIDUAL - SIZING CHARTS ARE GUIDELINES AND ARE SUBJECT TO SLIGHT VARIATIONS

PRODUCT COLOURS SHOWN WILL VARY DEPENDING ON PRINTING PROCESS OR MONITOR SETTINGS WHEN VIEWING ONLINE

PLEASE REFER TO FINISHED SAMPLES OR SALES REPRESENTATIVE FOR ANY QUESTIONS CONCERNING SIZING AND COLOURS







# CREW NECK FLEECE

## STYLE: #L7975

**SIZES:** XS - XL

**CONTENT:**

60% COTTON / 40% POLYESTER

**LEAD TIME:**

(FROM GRAPHIC APPROVAL)

**NEW ORDER:** 4-6 WEEKS

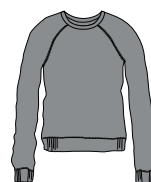
**REPEAT ORDER:** 2-4 WEEKS (CORE ONLY)

**MINIMUMS:** 48 PIECES

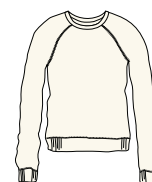
**DECORATION:** EMBROIDERY

**GRAPHIC SHOWN:** AZTEC

### CORE COLOURS



CHARCOAL



WHITE



BLACK

### BOOKING COLOURS



RED



DARK NAVY  
(SINGLE DYE)



ROYAL



FOREST



RIDER GREEN



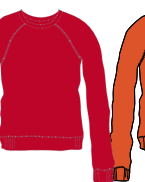
UCLA BLUE



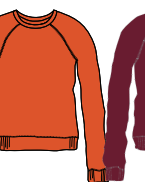
PURPLE



BURGUNDY



CARDINAL



ORANGE



MAROON

GARMENT FITTING MAY VARY FOR EACH INDIVIDUAL - SIZING CHARTS ARE GUIDELINES AND ARE SUBJECT TO SLIGHT VARIATIONS

PRODUCT COLOURS SHOWN WILL VARY DEPENDING ON PRINTING PROCESS OR MONITOR SETTINGS WHEN VIEWING ONLINE

PLEASE REFER TO FINISHED SAMPLES OR SALES REPRESENTATIVE FOR ANY QUESTIONS CONCERNING SIZING AND COLOURS

#### SIZE CHART

LADIES

#### BODY DIMENSIONS

	XS	S	M	L	XL	XXL
CHEST	34"	36"	38"	40"	42"	45"
SLEEVE LENGTH	31 1/2"	32"	32 1/2"	33"	33 1/2"	34 1/4"
BODY LENGTH	24 1/2"	25"	25 1/2"	26"	26 1/2"	27 1/4"





# COLOUR BLOCK CREW NECK

## STYLE: #L7947CB

**SIZES:** XS - XL

**CONTENT:**  
60% COTTON / 40% POLYESTER

**LEAD TIME:**  
(FROM GRAPHIC APPROVAL)

**NEW ORDER:** 4-6 WEEKS

**REPEAT ORDER:** 2-4 WEEKS (CORE ONLY)

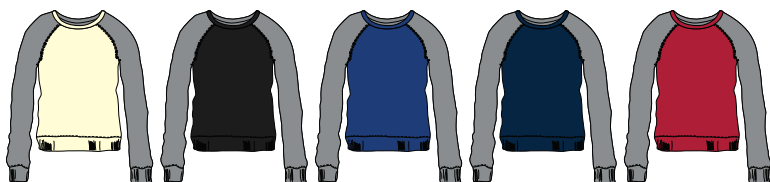
**MINIMUMS:** 48 PIECES

**DECORATION:** EMBROIDERY

**GRAPHIC SHOWN:** #153



### CORE COLOURS



CREAM

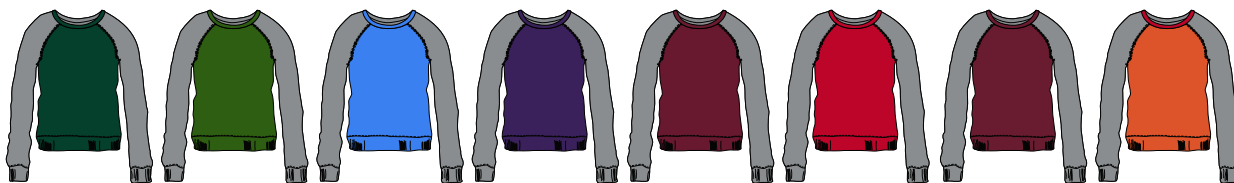
BLACK

ROYAL

DARK NAVY  
(SINGLE DYE)

RED

### BOOKING COLOURS



FOREST

RIDER GREEN

UCLA BLUE

PURPLE

BURGUNDY

CARDINAL

MAROON

ORANGE

SIZE CHART	BODY DIMENSIONS	XS	S	M	L	XL	XXL
LADIES	CHEST	34"	36"	38"	40"	42"	45"
	SLEEVE LENGTH	31 1/2"	32"	32 1/2"	33"	33 1/2"	34 1/4"
	BODY LENGTH	24 1/2"	25"	25 1/2"	26"	26 1/2"	27 1/4"

GARMENT FITTING MAY VARY FOR EACH INDIVIDUAL - SIZING CHARTS ARE GUIDELINES AND ARE SUBJECT TO SLIGHT VARIATIONS

PRODUCT COLOURS SHOWN WILL VARY DEPENDING ON PRINTING PROCESS OR MONITOR SETTINGS WHEN VIEWING ONLINE

PLEASE REFER TO FINISHED SAMPLES OR SALES REPRESENTATIVE FOR ANY QUESTIONS CONCERNING SIZING AND COLOURS





# POPSHOP HOOD

## STYLE: #L7902

**SIZES:** XS - XL

**CONTENT:**  
60% COTTON / 40% POLYESTER

**LEAD TIME:**  
(FROM GRAPHIC APPROVAL)

**NEW ORDER:** 4-6 WEEKS

**REPEAT ORDER:** 2-4 WEEKS (CORE ONLY)

**MINIMUMS:** 48 PIECES

**DECORATION:** EMBROIDERY

**GRAPHIC SHOWN:** #226

### CORE COLOURS



### BOOKING COLOURS



GARMENT FITTING MAY VARY FOR EACH INDIVIDUAL - SIZING CHARTS ARE GUIDELINES AND ARE SUBJECT TO SLIGHT VARIATIONS

PRODUCT COLOURS SHOWN WILL VARY DEPENDING ON PRINTING PROCESS OR MONITOR SETTINGS WHEN VIEWING ONLINE

PLEASE REFER TO FINISHED SAMPLES OR SALES REPRESENTATIVE FOR ANY QUESTIONS CONCERNING SIZING AND COLOURS

#### SIZE CHART

#### LADIES

#### BODY DIMENSIONS

	XS	S	M	L	XL	XXL
CHEST	35"	37"	39"	41"	43"	46"
SLEEVE LENGTH	34"	34 1/2"	35"	35 1/2"	36"	36 3/4"
BODY LENGTH	24 1/2"	25"	25 1/2"	26"	26 1/2"	27 1/4"



# COLOUR BLOCK HOOD

STYLE: #L7944

SIZES: XS - XL

CONTENT:

60% COTTON / 40% POLYESTER

LEAD TIME:

(FROM GRAPHIC APPROVAL)

NEW ORDER: 4-6 WEEKS

REPEAT ORDER: 2-4 WEEKS (CORE ONLY)

MINIMUMS: 48 PIECES

DECORATION: EMBROIDERY

GRAPHIC SHOWN: #50



## CORE COLOURS



CREAM

BLACK

ROYAL

DARK NAVY  
(SINGLE DYE)

## BOOKING COLOURS



FOREST

UCLA BLUE

NAVY

PURPLE

BURGUNDY

RED

CARDINAL

MAROON

ORANGE

RIDER GREEN

SIZE  
CHART

LADIES

### BODY DIMENSIONS

	XS	S	M	L	XL	XXL
CHEST	35"	37"	39"	41"	43"	46"
SLEEVE LENGTH	32 ½"	33"	33 ½"	34"	34 ½"	35 ¼"
BODY LENGTH	24 ½"	25"	25 ½"	26"	26 ½"	27 ¼"

GARMENT FITTING MAY VARY FOR EACH INDIVIDUAL - SIZING CHARTS ARE GUIDELINES AND ARE SUBJECT TO SLIGHT VARIATIONS

PRODUCT COLOURS SHOWN WILL VARY DEPENDING ON PRINTING PROCESS OR MONITOR SETTINGS WHEN VIEWING ONLINE

PLEASE REFER TO FINISHED SAMPLES OR SALES REPRESENTATIVE FOR ANY QUESTIONS CONCERNING SIZING AND COLOURS







# 1/4 ZIP MOCK

## STYLE: #L7969

**SIZES:** XS - XL

**CONTENT:**

60% COTTON / 40 % POLYESTER

**LEAD TIME:**

(FROM GRAPHIC APPROVAL)

**NEW ORDER:** 4-6 WEEKS

**REPEAT ORDER:** 2-4 WEEKS (CORE ONLY)

**MINIMUMS:** 48 PIECES

**DECORATION:** EMBROIDERY

**GRAPHIC SHOWN:** #55

### CORE COLOURS



CREAM

BLACK

### BOOKING COLOURS



CHARCOAL DARK BLACK FOREST RIDER GREEN UCLA BLUE ROYAL DARK NAVY (SINGLE DYE) PURPLE BURGUNDY RED CARDINAL ORANGE MAROON

GARMENT FITTING MAY VARY FOR EACH INDIVIDUAL - SIZING CHARTS ARE GUIDELINES AND ARE SUBJECT TO SLIGHT VARIATIONS

PRODUCT COLOURS SHOWN WILL VARY DEPENDING ON PRINTING PROCESS OR MONITOR SETTINGS WHEN VIEWING ONLINE

PLEASE REFER TO FINISHED SAMPLES OR SALES REPRESENTATIVE FOR ANY QUESTIONS CONCERNING SIZING AND COLOURS

#### SIZE CHART

#### LADIES

#### BODY DIMENSIONS

	XS	S	M	L	XL	XXL
CHEST	36"	37"	38"	39"	40"	43"
SLEEVE LENGTH	32"	32 1/2"	33"	33 1/2"	34"	34 3/4"
BODY LENGTH	25"	25 1/2"	26"	26 1/2"	27"	27 3/4"

# C.B. TRACK JACKET

## STYLE: #L8863

**SIZES:** XS - XL

**CONTENT:**

60% COTTON / 40% POLYESTER

**LEAD TIME:**

(FROM GRAPHIC APPROVAL)

**NEW ORDER:** 4-6 WEEKS

**REPEAT ORDER:** 2-4 WEEKS (CORE ONLY)

**MINIMUMS:** 48 PIECES

**DECORATION:** EMBROIDERY

**GRAPHIC SHOWN:** #142



### CORE COLOURS



### BOOKING COLOURS



SIZE CHART	BODY DIMENSIONS	XS	S	M	L	XL	XXL
LADIES	CHEST	31"	33"	35"	37"	39"	42"
	SLEEVE LENGTH	32"	32 1/2"	33"	33 1/2"	34"	34 3/4"
	BODY LENGTH	25"	25 1/2"	26"	26 1/2"	27"	27 3/4"

GARMENT FITTING MAY VARY FOR EACH INDIVIDUAL - SIZING CHARTS ARE GUIDELINES AND ARE SUBJECT TO SLIGHT VARIATIONS

PRODUCT COLOURS SHOWN WILL VARY DEPENDING ON PRINTING PROCESS OR MONITOR SETTINGS WHEN VIEWING ONLINE

PLEASE REFER TO FINISHED SAMPLES OR SALES REPRESENTATIVE FOR ANY QUESTIONS CONCERNING SIZING AND COLOURS





# CLASSIC FULL ZIP

## STYLE: #L7903

**SIZES:** XS - XL

**CONTENT:**

60% COTTON / 40% POLYESTER

**LEAD TIME:**

(FROM GRAPHIC APPROVAL)

**NEW ORDER:** 4-6 WEEKS

**REPEAT ORDER:** 2-4 WEEKS (CORE ONLY)

**MINIMUMS:** 48 PIECES

**DECORATION:** EMBROIDERY

**GRAPHIC SHOWN:** #187

### CORE COLOURS



### BOOKING COLOURS



GARMENT FITTING MAY VARY FOR EACH INDIVIDUAL - SIZING CHARTS ARE GUIDELINES AND ARE SUBJECT TO SLIGHT VARIATIONS

PRODUCT COLOURS SHOWN WILL VARY DEPENDING ON PRINTING PROCESS OR MONITOR SETTINGS WHEN VIEWING ONLINE

PLEASE REFER TO FINISHED SAMPLES OR SALES REPRESENTATIVE FOR ANY QUESTIONS CONCERNING SIZING AND COLOURS

#### SIZE CHART

#### LADIES

#### BODY DIMENSIONS

	XS	S	M	L	XL	XXL
CHEST	32"	34"	36"	38"	40"	43"
SLEEVE LENGTH	34"	34 1/2"	35"	35 1/2"	36"	36 3/4"
BODY LENGTH	24 1/2"	25"	25 1/2"	26"	26 1/2"	27 1/4"

# RELAXED YOGA LEGGING

## STYLE: #L8915

**SIZES:** XS - XL

**CONTENT:**  
88% POLYESTER / 12% SPANDEX

**LEAD TIME:**  
(FROM GRAPHIC APPROVAL)

**NEW ORDER:** 4-6 WEEKS

**REPEAT ORDER:** 2-4 WEEKS (CORE ONLY)

**MINIMUMS:** 48 PIECES

**DECORATION:** SCREEN PRINT

**GRAPHIC SHOWN:** #190



### CORE COLOURS



SOLID BLACK

### BOOKING COLOURS



MIDNIGHT

SIZE  
CHART

**BODY DIMENSIONS**

**XS**

**S**

**M**

**L**

**XL**

**WAIST**

**26"**

**28"**

**30"**

**32"**

**34"**

**HIP**

**33"**

**35"**

**37"**

**39"**

**41"**

**INSEAM**

**29"**

**29"**

**29"**

**29"**

**29"**

GARMENT FITTING MAY VARY FOR EACH INDIVIDUAL - SIZING CHARTS ARE GUIDELINES AND ARE SUBJECT TO SLIGHT VARIATIONS

PRODUCT COLOURS SHOWN WILL VARY DEPENDING ON PRINTING PROCESS OR MONITOR SETTINGS WHEN VIEWING ONLINE

PLEASE REFER TO FINISHED SAMPLES OR SALES REPRESENTATIVE FOR ANY QUESTIONS CONCERNING SIZING AND COLOURS







# YOGA LEGGING

## STYLE: #L8818

**SIZES:** XS - XL

**CONTENT:**

88% POLYESTER / 12% SPANDEX

**LEAD TIME:**

(FROM GRAPHIC APPROVAL)

**NEW ORDER:** 4-6 WEEKS

**REPEAT ORDER:** 2-4 WEEKS (CORE ONLY)

**MINIMUMS:** 48 PIECES

**DECORATION:** SCREEN PRINT

**GRAPHIC SHOWN:** #189

### CORE COLOURS



SOLID BLACK

### BOOKING COLOURS



MIDNIGHT

GARMENT FITTING MAY VARY FOR EACH INDIVIDUAL - SIZING CHARTS ARE GUIDELINES AND ARE SUBJECT TO SLIGHT VARIATIONS

PRODUCT COLOURS SHOWN WILL VARY DEPENDING ON PRINTING PROCESS OR MONITOR SETTINGS WHEN VIEWING ONLINE

PLEASE REFER TO FINISHED SAMPLES OR SALES REPRESENTATIVE FOR ANY QUESTIONS CONCERNING SIZING AND COLOURS

#### SIZE CHART

#### LADIES

#### BODY DIMENSIONS

	XS	S	M	L	XL
WAIST	26"	28"	30"	32"	34"
HIP	29"	31"	33"	35"	37"
INSEAM	30"	30"	30"	30"	30"



# YOGA CAPRI

## STYLE: #L8920

**SIZES:** XS - XL

**CONTENT:**

88% POLYESTER / 12% SPANDEX

**LEAD TIME:**

(FROM GRAPHIC APPROVAL)

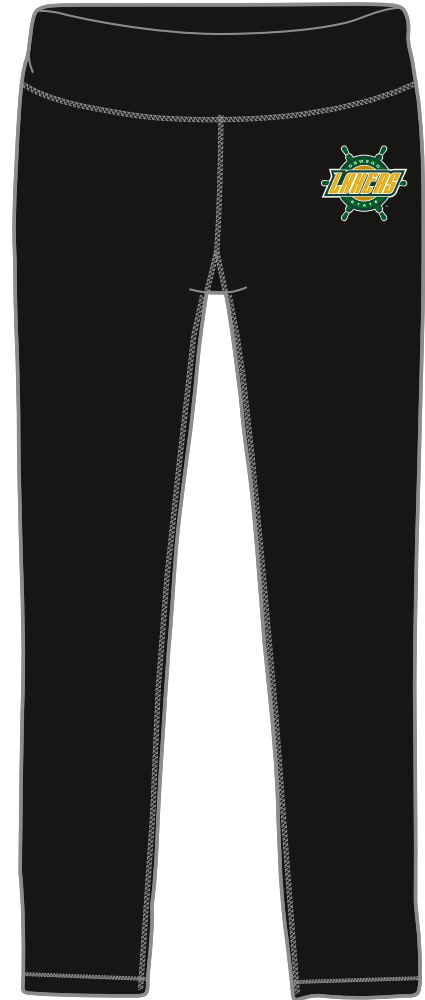
**NEW ORDER:** 4-6 WEEKS

**REPEAT ORDER:** 2-4 WEEKS (CORE ONLY)

**MINIMUMS:** 48 PIECES

**DECORATION:** SCREEN PRINT

**GRAPHIC SHOWN:** #42



### CORE COLOURS



BLACK

### BOOKING COLOURS



MIDNIGHT

#### SIZE CHART

#### BODY DIMENSIONS

	XS	S	M	L	XL
<b>WAIST</b>	26"	28"	30"	32"	34"
<b>HIP</b>	29"	31"	33"	35"	37"
<b>INSEAM</b>	22"	22"	22"	22"	22"

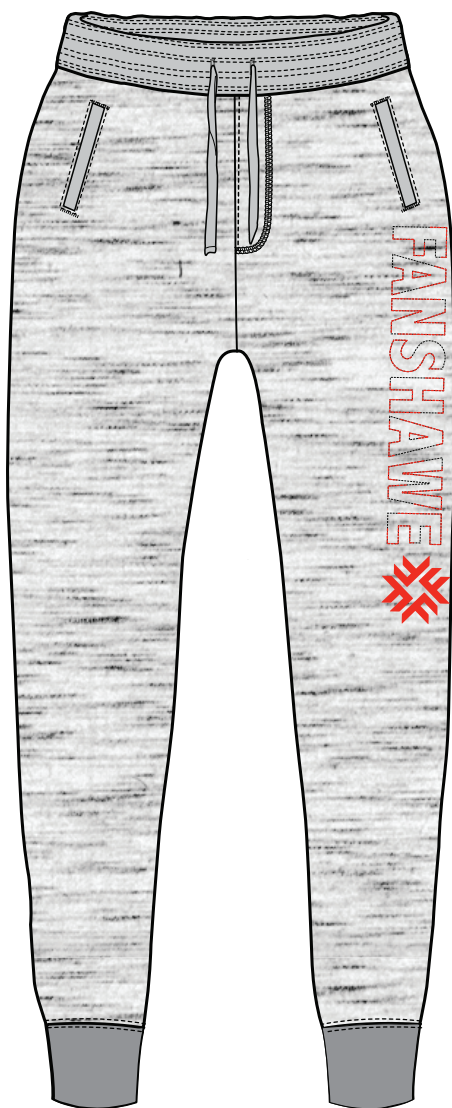
GARMENT FITTING MAY VARY FOR EACH INDIVIDUAL - SIZING CHARTS ARE GUIDELINES AND ARE SUBJECT TO SLIGHT VARIATIONS

PRODUCT COLOURS SHOWN WILL VARY DEPENDING ON PRINTING PROCESS OR MONITOR SETTINGS WHEN VIEWING ONLINE

PLEASE REFER TO FINISHED SAMPLES OR SALES REPRESENTATIVE FOR ANY QUESTIONS CONCERNING SIZING AND COLOURS







# REVERSE TERRY PANT

## STYLE: #L7103R

**SIZES:** XS - XL

**CONTENT:**

55% COTTON / 37% POLYESTER / 8% VISCOSE

**LEAD TIME:**

(FROM GRAPHIC APPROVAL)

**NEW ORDER:** 4-6 WEEKS

**REPEAT ORDER:** 2-4 WEEKS (CORE ONLY)

**MINIMUMS:** 48 PIECES

**DECORATION:** EMBROIDERY

**GRAPHIC SHOWN:** #287

### CORE COLOURS



BLACK  
BLACK



CHARCOAL  
CHARCOAL

### BOOKING COLOURS



OATMEAL



CHARCOAL

GARMENT FITTING MAY VARY FOR EACH INDIVIDUAL - SIZING CHARTS ARE GUIDELINES AND ARE SUBJECT TO SLIGHT VARIATIONS

PRODUCT COLOURS SHOWN WILL VARY DEPENDING ON PRINTING PROCESS OR MONITOR SETTINGS WHEN VIEWING ONLINE

PLEASE REFER TO FINISHED SAMPLES OR SALES REPRESENTATIVE FOR ANY QUESTIONS CONCERNING SIZING AND COLOURS

#### SIZE CHART

#### LADIES

#### BODY DIMENSIONS

	XS	S	M	L	XL
WAIST	26"	28"	30"	32"	34"
HIP	33"	35"	37"	39"	41"
INSEAM	29"	29"	29"	29"	29"



# CLASSIC CUFF PANT

## STYLE: #L7103

**SIZES:** XS - XL

**CONTENT:**  
60% COTTON / 40% POLYESTER

**LEAD TIME:**  
(FROM GRAPHIC APPROVAL)

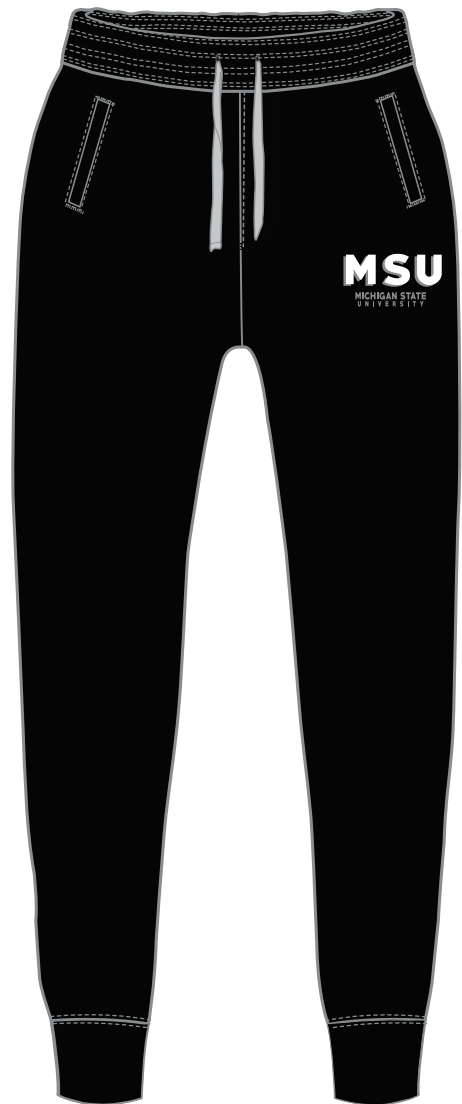
**NEW ORDER:** 4-6 WEEKS

**REPEAT ORDER:** 2-4 WEEKS (CORE ONLY)

**MINIMUMS:** 48 PIECES

**DECORATION:** EMBROIDERY

**GRAPHIC SHOWN:** #207



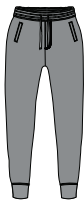
### CORE COLOURS



BLACK



DARK NAVY  
SINGLE DYE



CHARCOAL

### BOOKING COLOURS

SIZE  
CHART

#### BODY DIMENSIONS

WAIST

HIP

INSEAM

XS

S

M

L

XL

26"

28"

30"

32"

34"

33"

35"

37"

39"

41"

29"

29"

29"

29"

29"

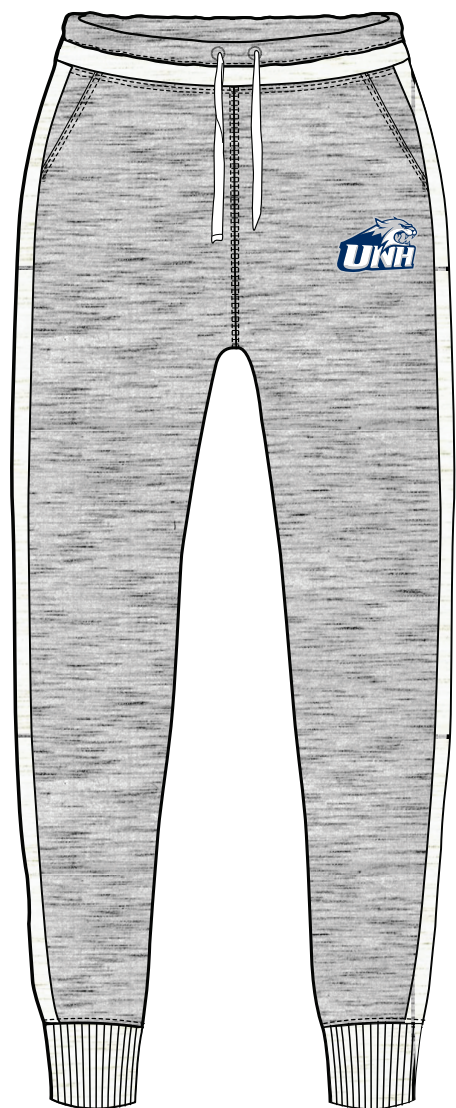
GARMENT FITTING MAY VARY FOR EACH INDIVIDUAL - SIZING CHARTS ARE GUIDELINES AND ARE SUBJECT TO SLIGHT VARIATIONS

PRODUCT COLOURS SHOWN WILL VARY DEPENDING ON PRINTING PROCESS OR MONITOR SETTINGS WHEN VIEWING ONLINE

PLEASE REFER TO FINISHED SAMPLES OR SALES REPRESENTATIVE FOR ANY QUESTIONS CONCERNING SIZING AND COLOURS







# COLOUR BLOCK PANT

## STYLE: #L7109

**SIZES:** XS - XL

**CONTENT:**

69% COTTON / 31% POLYESTER

**LEAD TIME:**

(FROM GRAPHIC APPROVAL)

**NEW ORDER:** 4-6 WEEKS

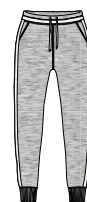
**REPEAT ORDER:** 2-4 WEEKS (CORE ONLY)

**MINIMUMS:** 48 PIECES

**DECORATION:** EMBROIDERY

**GRAPHIC SHOWN:** #42

### CORE COLOURS



CHARCOAL

### BOOKING COLOURS

GARMENT FITTING MAY VARY FOR EACH INDIVIDUAL - SIZING CHARTS ARE GUIDELINES AND ARE SUBJECT TO SLIGHT VARIATIONS

PRODUCT COLOURS SHOWN WILL VARY DEPENDING ON PRINTING PROCESS OR MONITOR SETTINGS WHEN VIEWING ONLINE

PLEASE REFER TO FINISHED SAMPLES OR SALES REPRESENTATIVE FOR ANY QUESTIONS CONCERNING SIZING AND COLOURS

#### SIZE CHART

#### LADIES

#### BODY DIMENSIONS

	XS	S	M	L	XL
WAIST	26"	28"	30"	32"	34"
HIP	33"	35"	37"	39"	41"
INSEAM	29"	29"	29"	29"	29"







# **MENS 2017 PROGRAM CORE STOCK**







# CLASSIC T-SHIRT

## STYLE: #M1601

**SIZES:** S-XXL

**CONTENT:**  
60% COTTON / 40% POLYESTER

**LEAD TIME:**  
(FROM GRAPHIC APPROVAL)

**NEW ORDER:** 4-6 WEEKS

**REPEAT ORDER:** 2-4 WEEKS (CORE ONLY)

**MINIMUMS:** 48 PIECES

**DECORATION:** SCREEN PRINT

**GRAPHIC SHOWN:** #259

### CORE COLOURS



CHARCOAL

SOLID  
DARK BLACK

BLACK

ROYAL

DARK NAVY  
(SINGLE DYE)

RED

### BOOKING COLOURS



FOREST

RIDER GREEN

UCLA BLUE

NAVY

PURPLE

BURGUNDY

WHITE

ASH GREY

CARDINAL

ORANGE

MAROON

GARMENT FITTING MAY VARY FOR EACH INDIVIDUAL - SIZING CHARTS ARE GUIDELINES AND ARE SUBJECT TO SLIGHT VARIATIONS

PRODUCT COLOURS SHOWN WILL VARY DEPENDING ON PRINTING PROCESS OR MONITOR SETTINGS WHEN VIEWING ONLINE

PLEASE REFER TO FINISHED SAMPLES OR SALES REPRESENTATIVE FOR ANY QUESTIONS CONCERNING SIZING AND COLOURS

#### SIZE CHART

#### MENS

#### BODY DIMENSIONS

	S	M	L	XL	XXL
CHEST	39"	41"	43"	46"	50"
SLEEVE LENGTH	16"	16 ½"	17"	17 ½"	18"
BODY LENGTH	28"	28 ½"	29"	29 ½"	30"

# V-NECK TEE

## STYLE: #M1600

**SIZES:** S-XXL

**CONTENT:**  
60% COTTON / 40% POLYESTER

**LEAD TIME:**  
(FROM GRAPHIC APPROVAL)

**NEW ORDER:** 4-6 WEEKS

**REPEAT ORDER:** 2-4 WEEKS (CORE ONLY)

**MINIMUMS:** 48 PIECES

**DECORATION:** SCREEN PRINT

**GRAPHIC SHOWN:** #254



### CORE COLOURS



CHARCOAL

WHITE

SOLID  
DARK BLACK

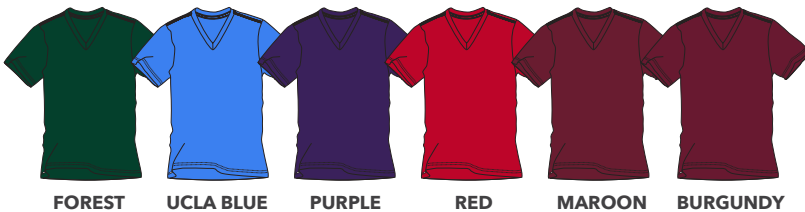
BLACK

ROYAL

DARK NAVY  
(SINGLE DYE)

RED

### BOOKING COLOURS



FOREST

UCLA BLUE

PURPLE

RED

MAROON

BURGUNDY

#### SIZE CHART

#### MENS

#### BODY DIMENSIONS

##### CHEST

#### XS

39"

#### S

41"

#### M

43"

#### L

46"

#### XL

50"

##### SLEEVE LENGTH

16"

16 1/2"

17"

17 1/2"

18"

##### BODY LENGTH

28"

28 1/2"

29"

29 1/2"

30"

GARMENT FITTING MAY VARY FOR EACH INDIVIDUAL - SIZING CHARTS ARE GUIDELINES AND ARE SUBJECT TO SLIGHT VARIATIONS

PRODUCT COLOURS SHOWN WILL VARY DEPENDING ON PRINTING PROCESS OR MONITOR SETTINGS WHEN VIEWING ONLINE

PLEASE REFER TO FINISHED SAMPLES OR SALES REPRESENTATIVE FOR ANY QUESTIONS CONCERNING SIZING AND COLOURS







# CLASSIC L/S T-SHIRT

## STYLE: #M1616

**SIZES:** S - XXL

**CONTENT:**

60% COTTON / 40% POLYESTER

**LEAD TIME:**

(FROM GRAPHIC APPROVAL)

**NEW ORDER:** 4-6 WEEKS

**REPEAT ORDER:** 2-4 WEEKS (CORE ONLY)

**MINIMUMS:** 48 PIECES

**DECORATION:** SCREEN PRINT

**GRAPHIC SHOWN:** #260

### CORE COLOURS



CHARCOAL



DARK BLACK



BLACK



ROYAL



DARK NAVY  
(SINGLE DYE)

### BOOKING COLOURS



ASH GREY



WHITE



PURPLE



FOREST



RIDER GREEN



UCLA BLUE



BURGUNDY



CARDINAL



ORANGE



MAROON

GARMENT FITTING MAY VARY FOR EACH INDIVIDUAL - SIZING CHARTS ARE GUIDELINES AND ARE SUBJECT TO SLIGHT VARIATIONS

PRODUCT COLOURS SHOWN WILL VARY DEPENDING ON PRINTING PROCESS OR MONITOR SETTINGS WHEN VIEWING ONLINE

PLEASE REFER TO FINISHED SAMPLES OR SALES REPRESENTATIVE FOR ANY QUESTIONS CONCERNING SIZING AND COLOURS

#### SIZE CHART

#### MENS

#### BODY DIMENSIONS

	XS	S	M	L	XL
CHEST	39"	41"	43"	46"	50"
SLEEVE LENGTH	35"	35 ½"	36"	36 ½"	37"
BODY LENGTH	28"	28 ½"	29"	29 ½"	30"



# CREW NECK FLEECE

## STYLE: #M7867

**SIZES:** S - XXL

**CONTENT:**  
60% COTTON / 40% POLYESTER

**LEAD TIME:**  
(FROM GRAPHIC APPROVAL)

**NEW ORDER:** 4-6 WEEKS

**REPEAT ORDER:** 2-4 WEEKS (CORE ONLY)

**MINIMUMS:** 48 PIECES

**DECORATION:** SCREEN PRINT

**GRAPHIC SHOWN:** #176



### CORE COLOURS



CHARCOAL

BLACK

ROYAL

DARK NAVY  
(SINGLE DYE)

### BOOKING COLOURS



ASH GREY

OATMEAL

SOLID BLACK

FOREST

RIDER GREEN

UCLA BLUE

BURGUNDY

CARDINAL

ORANGE

MAROON

RED

#### SIZE CHART

#### MENS

#### BODY DIMENSIONS

##### CHEST

44"

46"

48"

50"

53"

##### SLEEVE LENGTH

35 1/2"

36"

36 1/2"

37"

37 3/4"

##### BODY LENGTH

28"

28 1/2"

29"

29 1/2"

30 1/4"

GARMENT FITTING MAY VARY FOR EACH INDIVIDUAL - SIZING CHARTS ARE GUIDELINES AND ARE SUBJECT TO SLIGHT VARIATIONS

PRODUCT COLOURS SHOWN WILL VARY DEPENDING ON PRINTING PROCESS OR MONITOR SETTINGS WHEN VIEWING ONLINE

PLEASE REFER TO FINISHED SAMPLES OR SALES REPRESENTATIVE FOR ANY QUESTIONS CONCERNING SIZING AND COLOURS







# COLOUR BLOCK CREW NECK

## STYLE: #M7867T

**SIZES:** S - XXL

**CONTENT:**

60% COTTON / 40% POLYESTER

**LEAD TIME:**

(FROM GRAPHIC APPROVAL)

**NEW ORDER:** 4-6 WEEKS

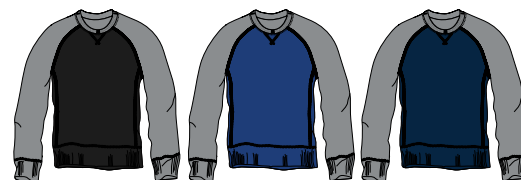
**REPEAT ORDER:** 2-4 WEEKS (CORE ONLY)

**MINIMUMS:** 48 PIECES

**DECORATION:** EMBROIDERY

**GRAPHIC SHOWN:** #242

### CORE COLOURS



BLACK

ROYAL

DARK NAVY  
(SINGLE DYE)

### BOOKING COLOURS



SOLID  
DARK BLACK

RED

NAVY

FOREST

RIDER GREEN

UCLA BLUE

PURPLE

BURGUNDY

CARDINAL

ORANGE

MAROON

GARMENT FITTING MAY VARY FOR EACH INDIVIDUAL - SIZING CHARTS ARE GUIDELINES AND ARE SUBJECT TO SLIGHT VARIATIONS

PRODUCT COLOURS SHOWN WILL VARY DEPENDING ON PRINTING PROCESS OR MONITOR SETTINGS WHEN VIEWING ONLINE

PLEASE REFER TO FINISHED SAMPLES OR SALES REPRESENTATIVE FOR ANY QUESTIONS CONCERNING SIZING AND COLOURS

#### SIZE CHART

MENS

#### BODY DIMENSIONS

	S	M	L	XL	XXL
CHEST	44"	46"	48"	50"	53"
SLEEVE LENGTH	35 1/2"	36"	36 1/2"	37"	37 3/4"
BODY LENGTH	28"	28 1/2"	29"	29 1/2"	30 1/4"



# 1/4 ZIP MOCK

## STYLE: #M8711

**SIZES:** S - XXL

**CONTENT:**

60% COTTON / 40% POLYESTER

**LEAD TIME:**

(FROM GRAPHIC APPROVAL)

**NEW ORDER:** 4-6 WEEKS

**REPEAT ORDER:** 2-4 WEEKS (CORE ONLY)

**MINIMUMS:** 48 PIECES

**DECORATION:** EMBROIDERY

**GRAPHIC SHOWN:** #253



### CORE COLOURS



CHARCOAL    BLACK    SOLID DARK BLACK    ROYAL    DARK NAVY (SINGLE DYE)

### BOOKING COLOURS



OATMEAL    RIDER GREEN    UCLA BLUE    PURPLE    BURGUNDY    RED    CARDINAL    ORANGE    MAROON

#### SIZE CHART

**MENS**

#### BODY DIMENSIONS

**CHEST**

**S** 43"

**M** 45"

**L** 47"

**XL** 49"

**XXL** 52"

**SLEEVE LENGTH**

**S** 35 1/2"

**M** 36"

**L** 36 1/2"

**XL** 37"

**XXL** 37 3/4"

**BODY LENGTH**

**S** 28"

**M** 28 1/2"

**L** 29"

**XL** 29 1/2"

**XXL** 30 1/4"

GARMENT FITTING MAY VARY FOR EACH INDIVIDUAL - SIZING CHARTS ARE GUIDELINES AND ARE SUBJECT TO SLIGHT VARIATIONS

PRODUCT COLOURS SHOWN WILL VARY DEPENDING ON PRINTING PROCESS OR MONITOR SETTINGS WHEN VIEWING ONLINE

PLEASE REFER TO FINISHED SAMPLES OR SALES REPRESENTATIVE FOR ANY QUESTIONS CONCERNING SIZING AND COLOURS







# COLLEGE HOOD

## STYLE: #M7860

**SIZES:** S - XXL

**CONTENT:**

60% COTTON / 40% POLYESTER

**LEAD TIME:**

(FROM GRAPHIC APPROVAL)

**NEW ORDER:** 4-6 WEEKS

**REPEAT ORDER:** 2-4 WEEKS (CORE ONLY)

**MINIMUMS:** 48 PIECES

**DECORATION:** EMBROIDERY

**GRAPHIC SHOWN:** #276

### CORE COLOURS



CHARCOAL OATMEAL SOLID DARK BLACK BLACK ROYAL DARK NAVY (SINGLE DYE) RED

### BOOKING COLOURS



ASH GREY NAVY FOREST RIDER GREEN UCLA BLUE PURPLE BURGUNDY CARDINAL ORANGE MAROON

GARMENT FITTING MAY VARY FOR EACH INDIVIDUAL - SIZING CHARTS ARE GUIDELINES AND ARE SUBJECT TO SLIGHT VARIATIONS

PRODUCT COLOURS SHOWN WILL VARY DEPENDING ON PRINTING PROCESS OR MONITOR SETTINGS WHEN VIEWING ONLINE

PLEASE REFER TO FINISHED SAMPLES OR SALES REPRESENTATIVE FOR ANY QUESTIONS CONCERNING SIZING AND COLOURS

#### SIZE CHART

#### MENS

#### BODY DIMENSIONS

	S	M	L	XL	XXL
CHEST	44"	46"	48"	50"	53"
SLEEVE LENGTH	36"	36 ½"	37"	37 ½"	38 ¼"
BODY LENGTH	28"	28 ½"	29"	29 ½"	30 ¼"



# COLOUR BLOCK HOOD

STYLE: #M2837

SIZES: S - XXL

CONTENT:

60% COTTON / 40% POLYESTER

LEAD TIME:

(FROM GRAPHIC APPROVAL)

NEW ORDER: 4-6 WEEKS

REPEAT ORDER: 2-4 WEEKS (CORE ONLY)

MINIMUMS: 48 PIECES

DECORATION: EMBROIDERY

GRAPHIC SHOWN: #257



## CORE COLOURS



BLACK

SOLID  
DARK BLACK

ROYAL

DARK NAVY  
(SINGLE DYE)

RED

## BOOKING COLOURS



FOREST

RIDER GREEN

UCLA BLUE

PURPLE

NAVY

BURGUNDY

CARDINAL

ORANGE

MAROON

### SIZE CHART

MENS

#### BODY DIMENSIONS

	S	M	L	XL	XXL
CHEST	44"	46"	48"	50"	53"
SLEEVE LENGTH	36"	36 1/2"	37"	37 1/2"	38 1/4"
BODY LENGTH	28"	28 1/2"	29"	29 1/2"	30 1/4"

GARMENT FITTING MAY VARY FOR EACH INDIVIDUAL - SIZING CHARTS ARE GUIDELINES AND ARE SUBJECT TO SLIGHT VARIATIONS

PRODUCT COLOURS SHOWN WILL VARY DEPENDING ON PRINTING PROCESS OR MONITOR SETTINGS WHEN VIEWING ONLINE

PLEASE REFER TO FINISHED SAMPLES OR SALES REPRESENTATIVE FOR ANY QUESTIONS CONCERNING SIZING AND COLOURS







# FULL ZIP HOOD

## STYLE: #M7870

**SIZES:** S - XXL

**CONTENT:**

60% COTTON / 40% POLYESTER

**LEAD TIME:**

(FROM GRAPHIC APPROVAL)

**NEW ORDER:** 4-6 WEEKS

**REPEAT ORDER:** 2-4 WEEKS (CORE ONLY)

**MINIMUMS:** 48 PIECES

**DECORATION:** EMBROIDERY

**GRAPHIC SHOWN:** #172

### CORE COLOURS



CHARCOAL



BLACK

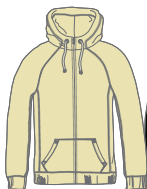


ROYAL



DARK NAVY  
(SINGLE DYE)

### BOOKING COLOURS



OATMEAL



SOLID  
DARK BLACK



RED



FOREST



RIDER GREEN



UCLA BLUE



PURPLE



BURGUNDY



CARDINAL



ORANGE



MAROON

GARMENT FITTING MAY VARY FOR EACH INDIVIDUAL - SIZING CHARTS ARE GUIDELINES AND ARE SUBJECT TO SLIGHT VARIATIONS

PRODUCT COLOURS SHOWN WILL VARY DEPENDING ON PRINTING PROCESS OR MONITOR SETTINGS WHEN VIEWING ONLINE

PLEASE REFER TO FINISHED SAMPLES OR SALES REPRESENTATIVE FOR ANY QUESTIONS CONCERNING SIZING AND COLOURS

#### SIZE CHART

#### MENS

#### BODY DIMENSIONS

	S	M	L	XL	XXL
CHEST	42"	44"	46"	48"	51"
SLEEVE LENGTH	36"	36 ½"	37"	37 ½"	37 ¾"
BODY LENGTH	28"	28 ½"	29"	29 ½"	30 ¼"





# FULL ZIP TRACK JACKET

## STYLE: #M8764

**SIZES:** S - XXL

**CONTENT:**

60% COTTON / 40% POLYESTER

**LEAD TIME:**

(FROM GRAPHIC APPROVAL)

**NEW ORDER:** 4-6 WEEKS

**REPEAT ORDER:** 2-4 WEEKS (CORE ONLY)

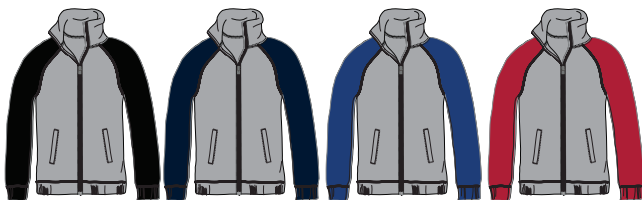
**MINIMUMS:** 48 PIECES

**DECORATION:** EMBROIDERY

**GRAPHIC SHOWN:** #69



### CORE COLOURS



CHARCOAL  
BLACK

CHARCOAL  
DARK NAVY S.D

CHARCOAL  
ROYAL

CHARCOAL  
RED

### BOOKING COLOURS



CHARCOAL  
FOREST

CHARCOAL  
RIDER GREEN

CHARCOAL  
UCLA BLUE

CHARCOAL  
PURPLE

CHARCOAL  
BURGUNDY

CHARCOAL  
CARDINAL

CHARCOAL  
ORANGE

CHARCOAL  
MAROON

#### SIZE CHART

#### MENS

#### BODY DIMENSIONS

##### CHEST

42"

44"

46"

48"

51"

##### SLEEVE LENGTH

36"

36 1/2"

37"

37 1/2"

38 1/4"

##### BODY LENGTH

28"

28 1/2"

29"

29 1/2"

30 1/4"

GARMENT FITTING MAY VARY FOR EACH INDIVIDUAL - SIZING CHARTS ARE GUIDELINES AND ARE SUBJECT TO SLIGHT VARIATIONS

PRODUCT COLOURS SHOWN WILL VARY DEPENDING ON PRINTING PROCESS OR MONITOR SETTINGS WHEN VIEWING ONLINE

PLEASE REFER TO FINISHED SAMPLES OR SALES REPRESENTATIVE FOR ANY QUESTIONS CONCERNING SIZING AND COLOURS





# FLEECE SHORTS

## STYLE: #M4828

**SIZES:** S - XL

**CONTENT:**

60% COTTON / 40% POLYESTER

**LEAD TIME:**

(FROM GRAPHIC APPROVAL)

**NEW ORDER:** 4-6 WEEKS

**REPEAT ORDER:** 2-4 WEEKS (CORE ONLY)

**MINIMUMS:** 48 PIECES

**DECORATION:** EMBROIDERY

**GRAPHIC SHOWN:** #269

### CORE COLOURS



CHARCOAL

BLACK

### BOOKING COLOURS



UCLA BLUE

ROYAL

DARK NAVY  
(SINGLE DYE)

RED

CARDINAL

MAROON

GARMENT FITTING MAY VARY FOR EACH INDIVIDUAL - SIZING CHARTS ARE GUIDELINES AND ARE SUBJECT TO SLIGHT VARIATIONS

PRODUCT COLOURS SHOWN WILL VARY DEPENDING ON PRINTING PROCESS OR MONITOR SETTINGS WHEN VIEWING ONLINE

PLEASE REFER TO FINISHED SAMPLES OR SALES REPRESENTATIVE FOR ANY QUESTIONS CONCERNING SIZING AND COLOURS

#### SIZE CHART

#### MENS

#### BODY DIMENSIONS

	S	M	L	XL
WAIST	31"	33"	35"	37"
HIP	21"	22"	23"	24"
INSEAM	11"	11"	11"	11"

# VINTAGE STRIPE PANTS

## STYLE: #M7316

**SIZES:** S - XL

**CONTENT:**  
69% COTTON / 31% POLYESTER

**LEAD TIME:**  
(FROM GRAPHIC APPROVAL)

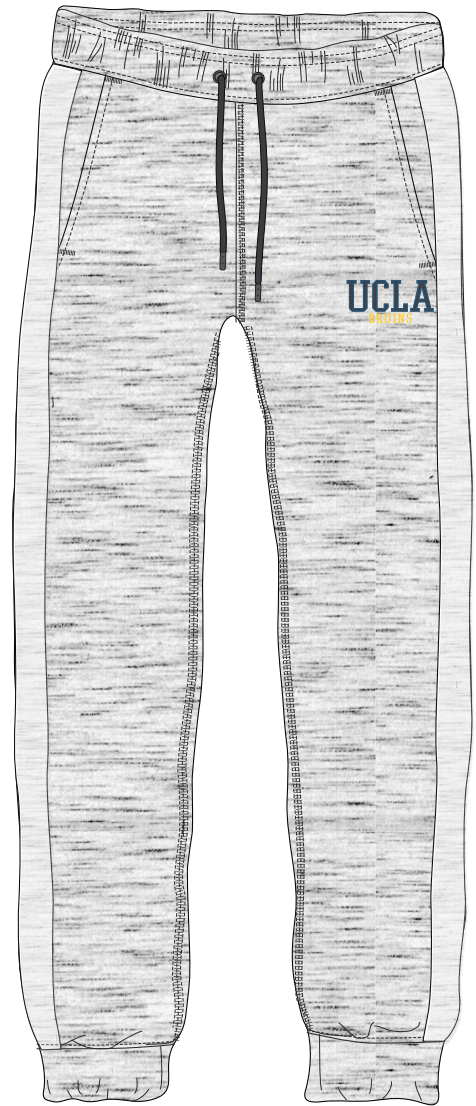
**NEW ORDER:** 4-6 WEEKS

**REPEAT ORDER:** 2-4 WEEKS (CORE ONLY)

**MINIMUMS:** 48 PIECES

**DECORATION:** EMBROIDERY

**GRAPHIC SHOWN:** #246



### CORE COLOURS



BLACK  
ASH



HEATHER GREY  
ASH

### BOOKING COLOURS



BLACK  
BLACK



CHARCOAL  
CHARCOAL

#### SIZE CHART

#### BODY DIMENSIONS

	S	M	L	XL
<b>WAIST</b>	32"	34"	36"	38"
<b>HIP</b>	40"	42"	44"	46"
<b>INSEAM</b>	32"	32"	32"	32"

GARMENT FITTING MAY VARY FOR EACH INDIVIDUAL - SIZING CHARTS ARE GUIDELINES AND ARE SUBJECT TO SLIGHT VARIATIONS

PRODUCT COLOURS SHOWN WILL VARY DEPENDING ON PRINTING PROCESS OR MONITOR SETTINGS WHEN VIEWING ONLINE

PLEASE REFER TO FINISHED SAMPLES OR SALES REPRESENTATIVE FOR ANY QUESTIONS CONCERNING SIZING AND COLOURS







# FLEECE PANTS

## STYLE: #M7400S

**SIZES:** S - XL

**CONTENT:**

60% COTTON / 40% POLYESTER

**LEAD TIME:**

(FROM GRAPHIC APPROVAL)

**NEW ORDER:** 4-6 WEEKS

**REPEAT ORDER:** 2-4 WEEKS (CORE ONLY)

**MINIMUMS:** 48 PIECES

**DECORATION:** EMBROIDERY

**GRAPHIC SHOWN:** #189

### CORE COLOURS



CHARCOAL



BLACK

### BOOKING COLOURS



SOLID  
DARK BLACK

GARMENT FITTING MAY VARY FOR EACH INDIVIDUAL - SIZING CHARTS ARE GUIDELINES AND ARE SUBJECT TO SLIGHT VARIATIONS

PRODUCT COLOURS SHOWN WILL VARY DEPENDING ON PRINTING PROCESS OR MONITOR SETTINGS WHEN VIEWING ONLINE

PLEASE REFER TO FINISHED SAMPLES OR SALES REPRESENTATIVE FOR ANY QUESTIONS CONCERNING SIZING AND COLOURS

#### SIZE CHART

#### MENS

#### BODY DIMENSIONS

	S	M	L	XL
WAIST	32 ½"	34 ½"	36 ½"	38 ½"
HIP	21"	22"	23"	24"
INSEAM	31"	31"	31"	31"





# KIDS 2017 PROGRAM CORE STOCK







# CLASSIC T-SHIRT

## STYLE: #K1601 / #T1601

**SIZES:** S - XL

**CONTENT:**  
60% COTTON / 40% POLYESTER

**LEAD TIME:**  
(FROM GRAPHIC APPROVAL)

**NEW ORDER:** 4-6 WEEKS

**REPEAT ORDER:** 2-4 WEEKS (CORE ONLY)

**MINIMUMS:** 48 PIECES

**DECORATION:** SCREEN PRINT

**GRAPHIC SHOWN:** #238

### CORE COLOURS



CHARCOAL

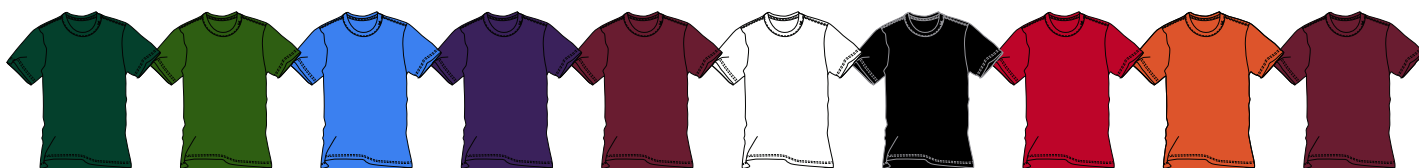
BLACK

ROYAL

DARK NAVY  
(SINGLE DYE)

RED

### BOOKING COLOURS



FOREST

RIDER GREEN

UCLA BLUE

PURPLE

BURGUNDY

WHITE

SOLID  
DARK BLACK

CARDINAL

ORANGE

MAROON

GARMENT FITTING MAY VARY FOR EACH INDIVIDUAL - SIZING CHARTS ARE GUIDELINES AND ARE SUBJECT TO SLIGHT VARIATIONS

PRODUCT COLOURS SHOWN WILL VARY DEPENDING ON PRINTING PROCESS OR MONITOR SETTINGS WHEN VIEWING ONLINE

PLEASE REFER TO FINISHED SAMPLES OR SALES REPRESENTATIVE FOR ANY QUESTIONS CONCERNING SIZING AND COLOURS

SIZE CHART	BODY DIMENSIONS	S	M	L	XL
KIDS	CHEST	31"	33"	35"	37"
	SLEEVE LENGTH	11 3/4"	12 1/2"	13 1/4"	14"
	BODY LENGTH	20 1/2"	21 1/2"	22 1/2"	23 1/2"
SIZE CHART	BODY DIMENSIONS	S	M	L	XL
KIDS	CHEST	23 3/4"	25"	26 1/4"	27 1/2"
	SLEEVE LENGTH	8 3/4"	9 1/2"	10 1/4"	11"
	BODY LENGTH	13 7/8"	14 3/4"	15 5/8"	16 1/2"



# COLLEGE HOOD

## STYLE: #K7860 / T7860

**SIZES:** S - XL

**CONTENT:**  
60% COTTON / 40% POLYESTER

**LEAD TIME:**  
(FROM GRAPHIC APPROVAL)

**NEW ORDER:** 4-6 WEEKS

**REPEAT ORDER:** 2-4 WEEKS (CORE ONLY)

**MINIMUMS:** 48 PIECES

**DECORATION:** EMBROIDERY

**GRAPHIC SHOWN:** #251



### CORE COLOURS



CHARCOAL

CREAM

BLACK

ROYAL

DARK NAVY  
(SINGLE DYE)

RED

### BOOKING COLOURS



OATMEAL

SOLID  
DARK BLACK

NAVY

FOREST

RIDER GREEN

UCLA BLUE

PURPLE

BURGUNDY

CARDINAL

ORANGE

MAROON

#### SIZE CHART

KIDS

#### BODY DIMENSIONS

S

M

L

XL

CHEST

33"

35"

37"

39"

SLEEVE LENGTH

26 1/4"

27 1/2"

28 3/4"

30"

BODY LENGTH

21

22"

23"

24"

GARMENT FITTING MAY VARY FOR EACH INDIVIDUAL - SIZING CHARTS ARE GUIDELINES AND ARE SUBJECT TO SLIGHT VARIATIONS

PRODUCT COLOURS SHOWN WILL VARY DEPENDING ON PRINTING PROCESS OR MONITOR SETTINGS WHEN VIEWING ONLINE

PLEASE REFER TO FINISHED SAMPLES OR SALES REPRESENTATIVE FOR ANY QUESTIONS CONCERNING SIZING AND COLOURS

#### SIZE CHART

KIDS

#### BODY DIMENSIONS

S

M

L

XL

CHEST

25 3/4"

27"

28 1/4"

29 1/2"

SLEEVE LENGTH

18 7/8"

19 1/2"

20 1/8"

20 3/4"

BODY LENGTH

13 7/8"

14 3/4"

15 5/8"

16 1/2"







# COLOUR BLOCK HOOD

## STYLE: #K2837 / #T2837

**SIZES:** S - XL

**CONTENT:**  
60% COTTON / 40% POLYESTER

**LEAD TIME:**  
(FROM GRAPHIC APPROVAL)

**NEW ORDER:** 4-6 WEEKS

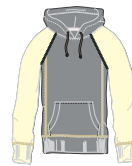
**REPEAT ORDER:** 2-4 WEEKS (CORE ONLY)

**MINIMUMS:** 48 PIECES

**DECORATION:** EMBROIDERY

**GRAPHIC SHOWN:** #252

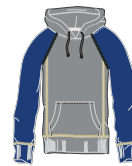
### CORE COLOURS



CREAM



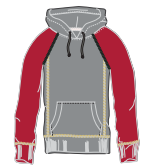
BLACK



ROYAL

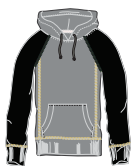


DARK NAVY  
(SINGLE DYE)

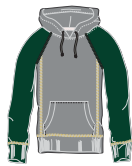


RED

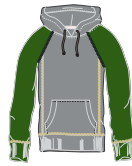
### BOOKING COLOURS



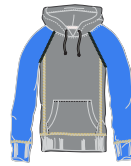
SOLID  
DARK BLACK



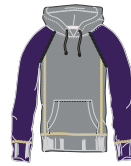
FOREST



RIDER GREEN



UCLA BLUE



PURPLE



BURGUNDY



CARDINAL



ORANGE



MAROON

GARMENT FITTING MAY VARY FOR EACH INDIVIDUAL - SIZING CHARTS ARE GUIDELINES AND ARE SUBJECT TO SLIGHT VARIATIONS

PRODUCT COLOURS SHOWN WILL VARY DEPENDING ON PRINTING PROCESS OR MONITOR SETTINGS WHEN VIEWING ONLINE

PLEASE REFER TO FINISHED SAMPLES OR SALES REPRESENTATIVE FOR ANY QUESTIONS CONCERNING SIZING AND COLOURS

SIZE CHART		BODY DIMENSIONS	S	M	L	XL
KIDS	CHEST	33"	35"	37"	39"	
	SLEEVE LENGTH	26 ¼"	27 ½"	28 ¾"	30"	
	BODY LENGTH	21"	22"	23"	24"	

SIZE CHART		BODY DIMENSIONS	S	M	L	XL
KIDS	CHEST	25 ¾"	27"	28 ¼"	29 ½"	
	SLEEVE LENGTH	18 ⅞"	19 ½"	20 ⅞"	20 ¾"	
	BODY LENGTH	13 ⅞"	14 ¾"	15 ⅝"	16 ½"	



# FULL ZIP HOOD

## STYLE: #K7870 / T7870

**SIZES:** S - XL

**CONTENT:**  
60% COTTON / 40% POLYESTER

**LEAD TIME:**  
(FROM GRAPHIC APPROVAL)

**NEW ORDER:** 4-6 WEEKS

**REPEAT ORDER:** 2-4 WEEKS (CORE ONLY)

**MINIMUMS:** 48 PIECES

**DECORATION:** EMBROIDERY

**GRAPHIC SHOWN:** #71



### CORE COLOURS



CHARCOAL

BLACK

ROYAL

CREAM

### BOOKING COLOURS



SOLID  
DARK BLACK

RED

FOREST

RIDER GREEN

UCLA BLUE

PURPLE

DARK NAVY  
(SINGLE DYE)

CARDINAL

ORANGE

MAROON

#### SIZE CHART

KIDS

#### BODY DIMENSIONS

S

M

L

XL

CHEST

33"

35"

37"

39"

SLEEVE LENGTH

26 1/4"

27 1/2"

28 3/4"

30"

BODY LENGTH

21

22"

23"

24"

GARMENT FITTING MAY VARY FOR EACH INDIVIDUAL - SIZING CHARTS ARE GUIDELINES AND ARE SUBJECT TO SLIGHT VARIATIONS

PRODUCT COLOURS SHOWN WILL VARY DEPENDING ON PRINTING PROCESS OR MONITOR SETTINGS WHEN VIEWING ONLINE

PLEASE REFER TO FINISHED SAMPLES OR SALES REPRESENTATIVE FOR ANY QUESTIONS CONCERNING SIZING AND COLOURS

#### SIZE CHART

KIDS

#### BODY DIMENSIONS

S

M

L

XL

CHEST

25 3/4"

27"

28 1/4"

29 1/2"

SLEEVE LENGTH

18 7/8"

19 1/2"

20 1/8"

23 3/4"

BODY LENGTH

13 7/8"

14 3/4"

15 5/8"

16 1/2"







# ELASTIC BOTTOM PANTS

STYLE: #K7883 / #T7883

**SIZES:** S - XL

**CONTENT:**

60% COTTON / 40% POLYESTER

**LEAD TIME:**

(FROM GRAPHIC APPROVAL)

**NEW ORDER:** 4-6 WEEKS

**REPEAT ORDER:** 2-4 WEEKS (CORE ONLY)

**MINIMUMS:** 48 PIECES

**DECORATION:** SCREEN PRINT

**GRAPHIC SHOWN:** #190

## CORE COLOURS



CHARCOAL



BLACK

## BOOKING COLOURS



DARK NAVY

GARMENT FITTING MAY VARY FOR EACH INDIVIDUAL - SIZING CHARTS ARE GUIDELINES AND ARE SUBJECT TO SLIGHT VARIATIONS

PRODUCT COLOURS SHOWN WILL VARY DEPENDING ON PRINTING PROCESS OR MONITOR SETTINGS WHEN VIEWING ONLINE

PLEASE REFER TO FINISHED SAMPLES OR SALES REPRESENTATIVE FOR ANY QUESTIONS CONCERNING SIZING AND COLOURS

SIZE CHART	BODY DIMENSIONS	S	M	L	XL
KIDS	WAIST	10 1/2"	11 1/2"	12 1/2"	13 1/2"
	HIP	15 1/2"	16 1/2"	17 1/2"	18 1/2"
	INSEAM	24 1/2"	25 1/2"	26 1/2"	27 1/2"
SIZE CHART	BODY DIMENSIONS	S	M	L	
KIDS	WAIST	6 5/8"	7 1/2"	8 3/8"	
	HIP	11 7/8"	12 1/2"	13 1/8"	
	INSEAM	15 1/8"	16"	16 7/8"	



# THE LIFESTYLE







Lined area for notes and instructions.

Lined area for notes.



**CORPORATE HEAD OFFICE**

380 Hardy Road  
Brantford, On N3T 5L8  
T: (519) 759-6411 ext. 228  
F: (519) 759-6752  
[www.campuscrew.com](http://www.campuscrew.com)



Campus Crew



@CampusCrew88



@CampusCrew88



