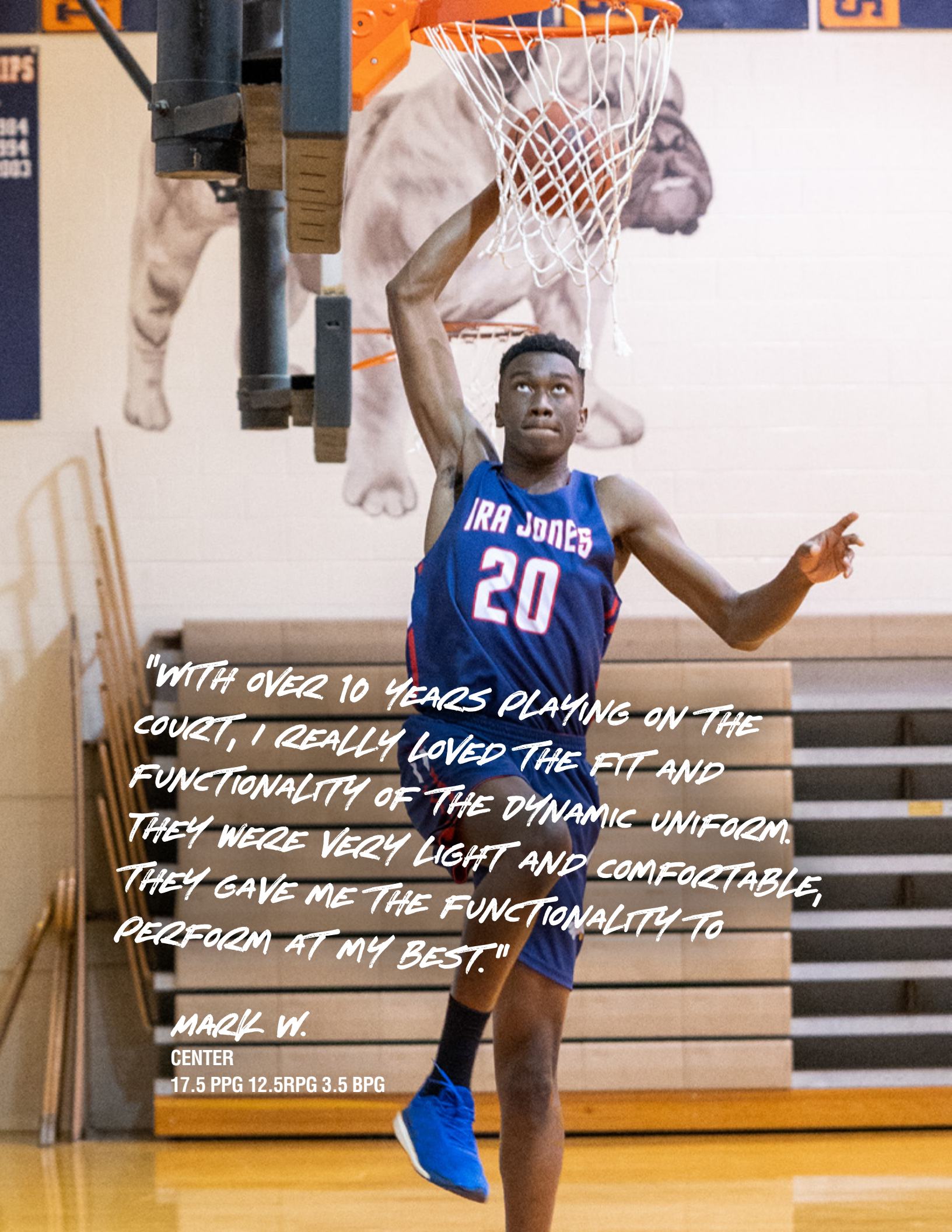




2019 BASKETBALL



"WITH OVER 10 YEARS PLAYING ON THE COURT, I REALLY LOVED THE FIT AND FUNCTIONALITY OF THE DYNAMIC UNIFORM. THEY WERE VERY LIGHT AND COMFORTABLE, THEY GAVE ME THE FUNCTIONALITY TO PERFORM AT MY BEST."

MARK W.

CENTER

17.5 PPG 12.5RPG 3.5 BPG



FROM OUR CEO

As you will see in these pages, Dynamic athletes are one of a kind. They are motivated by personal bests, focused on team achievement, and dedicated to their love of the game. Our 2019 line is inspired by these athletes, and this year we are proud to present some of our most innovative work: garments designed to highlight the athlete within.

This year we are pleased to launch our best-ever fabrics, made with all new top-of-the-line moisture wicking and cooling technologies, as well as our new products like our fanwear and Pro Gear. We've taken a determined eye to our cuts and styles, as always focused on creating the best garment we can. Achieving style without losing function, driving performance without sacrificing comfort.

The definition of the word Dynamic is *"in a constant state of change, or progress"*. It means a positive attitude, full of energy and new ideas. We applied this fresh-look philosophy to our 2019 line, and we look forward to working with you in the upcoming athletic year to continue reach past the boundaries of what a uniform can be.

Sincerely,
Dan Clarkson

C.E.O.
Virginia Beach, Virginia

HISTORY OF DYNAMIC.



1998

Peter Green Ltd. acquired North American Team Suppliers (NATS), a small Canadian sportswear manufacturer, Dynamic was formed.

2002

Dynamic became the first company to adopt digital sublimation.

2016

Relaunch of the Dynamic brand with a focus on new products and customer service.

2000

Dynamic introduces the first uniform configurator at a tradeshow before online configurators were available.

2004

Dynamic is the first to adopt a digital workflow, which reduced production times, increased the customization options and allowed for the starting of a workflow that produced consistent colors year after year.

2018

Dynamic was acquired by TDI Dynamic LLC, located in Virginia Beach, Virginia.

Dynamic is currently operating out of Toronto, Canada, at it's biggest capacity, with our production facility over 50,000 square feet and two sales offices located in Exton, Pennsylvania and Virginia Beach, Virginia.



ANYTHING BUT UNIFORM.

TAKING SPORTSWEAR TO A NEW LEVEL.

With 30 years of experience in uniform construction, design, and sublimation at our back, we are focused on taking our product to the next level in 2019. We have a renewed focus on uniform innovation and product diversity, and we are excited to introduce our newest ventures in this year's catalog.

REIMAGED FABRICS.

Our custom cut and sew process has been finely tuned over our decades of experience, and now we are upping the game with a revitalized line of fabrics. Our gear is now made with Maxidri, a moisture management fabric, and Microblock, an antibacterial fabric, both of which are designed to achieve ideal sports uniform durability and flexibility in addition to being functional.

fabric options:



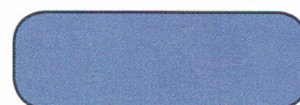
Dyna-Dry™ - 100% Polyester
• Flat-Backed Mock Mesh
• Moisture Wicking
• Performance Knit



Dry-Tec™ - 100% Polyester
• Micro Fiber • Soft Hand
Breathable • Moisture Wicking



Aerofiber - 92% Polyester / 8% Spandex • Performance Open Hole
Stretch Mesh • Moisture Wicking



Flex Dry - 90% Polyester / 10% Spandex - Performance
• Body Forming • Mechanical Stretch



Air Mesh - 100% Polyester
• Technical Track Knit Mesh
• Classic Ice Hockey Fabric
• Breathable & Strong



Pin Hole Mesh - 100% Polyester
• Pin Hole Mesh Provides
Functionality and Performance
• Strong & Breathable



Rip Dry - 100% Polyester Square-
Dance fabric • High performance
Dry-Time characteristics



Stretch Tec - 91% Polyester / 9% Spandex • 9.5 or 6 oz option
• MidWeight and Heavy Performance
• Compression New Bounce Back
Technology



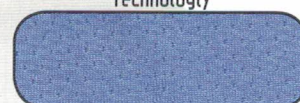
Rice Mesh - 100% Poly Pro Bright-
Mesh • Performance Driven



Heavy Dazzle - 100% Polyester
• Strong and Durable



Heavy Baseball - 100% Polyester
• Durable • Breathable • Moisture Wicking



Dual Wick - 100% High Tech Closed-Hole
Knit Mesh • Can be Sublimated on Both Sides
• New High Block Technology

color options: * Due to the difference in the printing process, the displayed colors are not an exact match to the fabric standards



yellow



gold



orange



tex org



brown



maroon



ath crd



red



pink



vegas



lime



kelly



forest



hunter



teal



sky



royal



navy



ath pur



silver



grey



black

Possible Font options: * Custom fonts welcomed! Custom fonts must be provided when placing your team order

FULL BLOCK

A B C D E F G H I J K L M N O P Q R S T U V W X Y Z

FACET HEAVY

A B C D E F G H I J K L M N O P Q R S T U V W X Y Z

COGUARS

A B C D E F G H I J K L M N O P Q R S T U V W X Y Z

FBRush

A B C D E F G H I J K L M N O P Q R S T U V W X Y Z

STAHLSTIFFANY

A B C D E F G H I J K L M N O P Q R S T U V W X Y Z

1 2 3 4 5 6 7 8 9 0

1 2 3 4 5 6 7 8 9 0

1 2 3 4 5 6 7 8 9 0

1 2 3 4 5 6 7 8 9 0

1 2 3 4 5 6 7 8 9 0

Possible Team Name Treatments:

FULL BLOCK
arch

FULL BLOCK
arc

FULL BLOCK
shear

FULL BLOCK
flat top
arch

Possible Team Name/Number Treatments:

solid

TEAM

1 stroke

TEAM

drop shadow

TEAM

2 stroke

TEAM

5

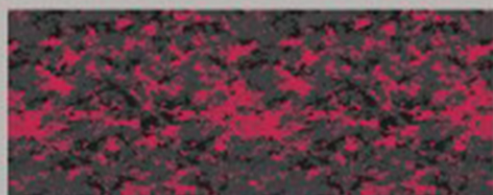
5

5

5

SUBLIMATED SWATCH PATTERNS

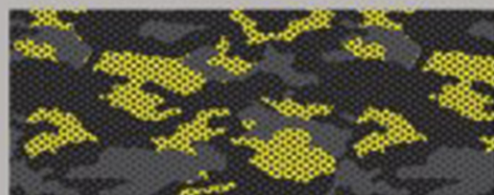
CAMO



DIGITAL CAMO - 3 & 4 COLOR AVAILABLE



TRADITIONAL CAMO - 4 COLOR



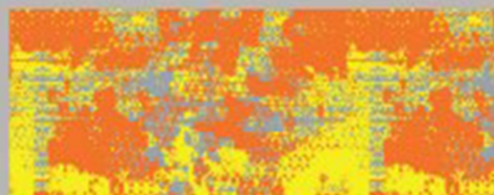
MESH CAMO - 4 COLOR



HONEYCOMB - 4 COLOR



DOT CAMO - 5 COLOR

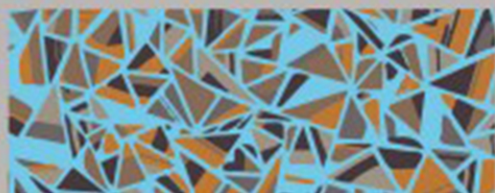


ALTERNATIVE CAMO - 3 COLOR

GEOMETRIC



GEOMETRY - 3 COLOR



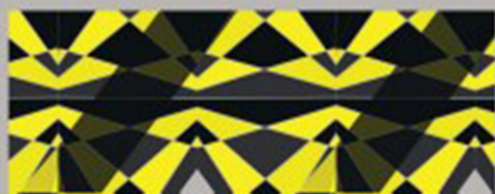
TRIBAL TRIANGLE- 5 COLOR



CHEVERON - 4 COLOR



INTERLOCKING TRI COLOR - 3 COLOR

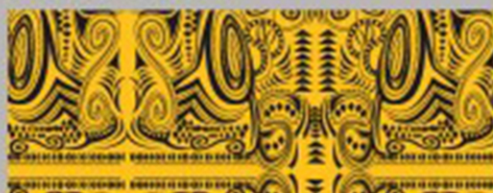


SHATTER - 4 COLOR

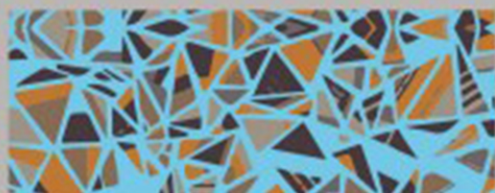


TOWER - 3 COLOR

ABSTRACT



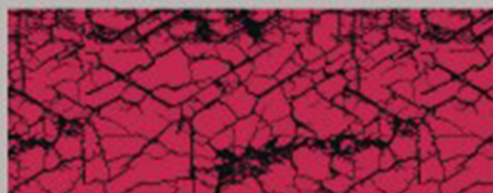
TRIBAL - 2 COLOR



TRIANGLE SQUARES - 4 COLOR



COBRA - 3 COLOR + TONAL 3 COLR



CRACKLE - 2 COLOR



FRACTURE - 50% COLOR OVERLAY



DIAMOND MESH - 2 COLOR

PRO LEVEL FABRICS AT BUZZER BEATING PRICES



BASELINE
(BB100)
REVERSIBLE
GAME JERSEY

COLOR 1:
HUNTER



COLOR 2:
WHITE



COLOR 3:
GOLD



From the time you tip-off until the clock hits zero, our lightweight, breathable fabrics and custom designs will keep you feeling cool and looking even cooler.

Choose from one of our catalog designs or create a unique custom design that will have your team looking good on the hardwood.

Our 100 Series basketball uniforms are available in men's, women's, and youth sizing, come standard with a sewn in v-neck, sewn-in fixed-width 3" side panel, and sewn-in arm trim upon request.

Matching shorts are available in 7", 9" or 11" inseams, come standard with a gripper elastic waistline to ensure clean tuck for the duration of playing time and feature a drawstring to achieve the optimal fit.



BASELINE
(BB604)
FULL CUT
SHORTS

COLOR 1:
HUNTER



COLOR 2:
WHITE



COLOR 3:
GOLD



REVERSIBLE UNIFORMS! Any design you see with this symbol can be purchased as a style on its own or made into a reversible color uniform.

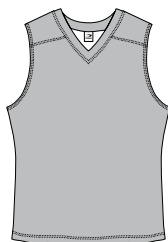
SELECT YOUR CUT



GAME

(BB100)

- » Flatlock seam construction
- » 4" Side panel inserts
- » V-neck or fusion neck available
- » Single or double ply reversible available
- » Also available in women's



400 SERIES

(BB400)

- » Flatlock seam construction
- » Shoulder inserts
- » Front panel wraps to back
- » V-neck or fusion neck available
- » Single or double ply reversible available
- » Also available in women's

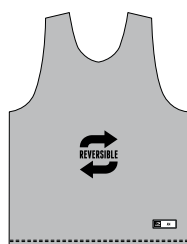


NEW CUT

RETRO

(BB350)

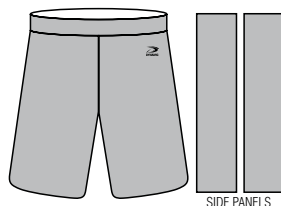
- » Two panels, crew neck
- » Serged seam construction
- » Neck and arm trim
- » Straight hemmed bottom
- » Single or double ply reversible available
- » Also available in women's



PRACTICE REVERSIBLE

(BB300, BB301)

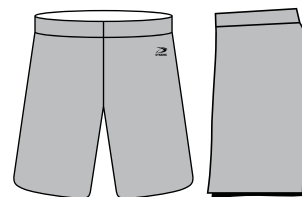
- » Two panels, round neck
- » Flatlock seam construction
- » Straight hemmed bottom
- » Single or double ply reversible available
- » Also available in women's



150 SHORTS

(BB601)

- » 4" side panels
- » 2" gripper elastic waistband with drawstring
- » 7", 9" and 11" inseam lengths available



FULL CUT SHORTS

(BB604)

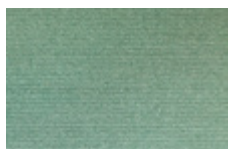
- » Ideal for large artwork
- » 2" covered elastic waistband with drawstring
- » 7", 9" and 11" inseam lengths available

RECOMMENDED FABRICS



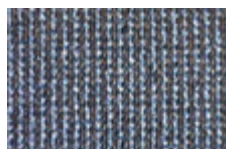
DYNA DRY

A flat-backed mock mesh, moisture wicking performance fabric.
(100% Polyester)



FLEX DRY

Breathable, light weight, two-way stretch with moisture management.
(90% Polyester / 10% Spandex)



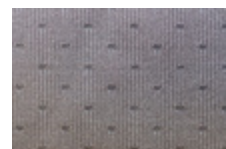
DRY TEC

Lightweight, micro fiber, pique moisture wicking fabric. Smooth, flat face, without texture.
(100% Polyester)



DUAL WICK

Double knit, mesh look, mid weight, breathable, moisture wicking fabric. Suggested for single ply reversibles.



AEROFIBER

Lightweight, stretchable and breathable, open pin hole mesh. Moisture wicking, four-way stretch, performance fabric. (90% Polyester / 10% Spandex)





BACKCOURT

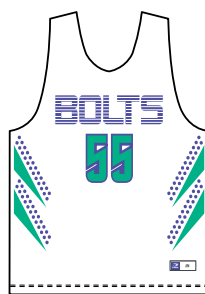
(BB301)
REVERSIBLE
PRACTICE JERSEY

(BB604)
FULL CUT
SHORTS



COLOR 1: NAVY
COLOR 2: RED
COLOR 3: WHITE

COLOR 1: RED
COLOR 2: NAVY
COLOR 3: WHITE



FADEAWAY

(BB301)
REVERSIBLE
PRACTICE JERSEY

(BB604)
FULL CUT
SHORTS



COLOR 1: WHITE
COLOR 2: TEAL
COLOR 3: PURPLE

COLOR 1: TEAL
COLOR 2: PURPLE
COLOR 3: BLACK



ASSIST

(BB301)
REVERSIBLE
PRACTICE JERSEY

(BB604)
FULL CUT
SHORTS



COLOR 1: WHITE
COLOR 2: BLACK
COLOR 3: RED

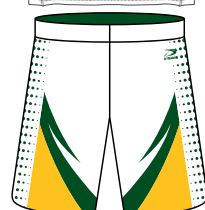
COLOR 1: BLACK
COLOR 2: WHITE
COLOR 3: RED



BASELINE

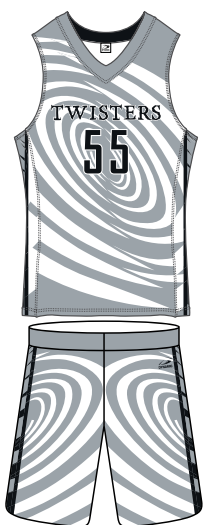
(BB100)
REVERSIBLE
GAME JERSEY

(BB604)
FULL CUT
SHORTS



COLOR 1: WHITE
COLOR 2: GOLD
COLOR 3: HUNTER

COLOR 1: HUNTER
COLOR 2: WHITE
COLOR 3: GOLD



CROSSOVER

(BB100)
REVERSIBLE
GAME JERSEY

(BB604)
FULL CUT
SHORTS



COLOR 1: SILVER
COLOR 2: WHITE
COLOR 3: BLACK

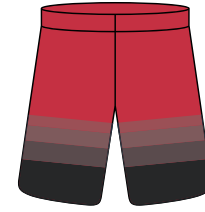
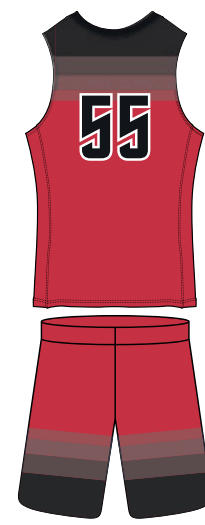
COLOR 1: BLACK
COLOR 3: WHITE
COLOR 2: 50% BLACK



DUNK


(BB100)
GAME JERSEY

(BB604)
FULL CUT
SHORTS



COLOR 1: RED
COLOR 2: BLACK






DRIBBLE
(BB100)
GAME JERSEY




(BB604)
FULL CUT
SHORTS


COLOR 1: WHITE
COLOR 2: GOLD
COLOR 3: BLACK




55



LEFT RIGHT




HANG TIME
(BB100)
GAME JERSEY




(BB604)
FULL CUT
SHORTS

COLOR 1: SILVER
COLOR 2: GOLD
COLOR 3: WHITE
COLOR 4: BLACK



NAMES
55



LEFT RIGHT



TURNOVER
(BB100)
GAME JERSEY



(BB604)
FULL CUT
SHORTS

COLOR 1: BLACK
COLOR 2: 50% BLACK
COLOR 3: 25% BLACK
COLOR 4: TEAL



55



LEFT RIGHT



MAURADER
(BB100)
GAME JERSEY



(BB601)
150 SERIES
SHORTS


COLOR 1: ORANGE
COLOR 2: NAVY
COLOR 3: WHITE




55



LEFT RIGHT




CHARGE
(BB100)
GAME JERSEY




(BB604)
FULL CUT
SHORTS

COLOR 1: NAVY
COLOR 2: ORANGE
COLOR 3: WHITE



55



LEFT RIGHT



SWISH
(BB100)
GAME JERSEY



(BB604)
FULL CUT
SHORTS

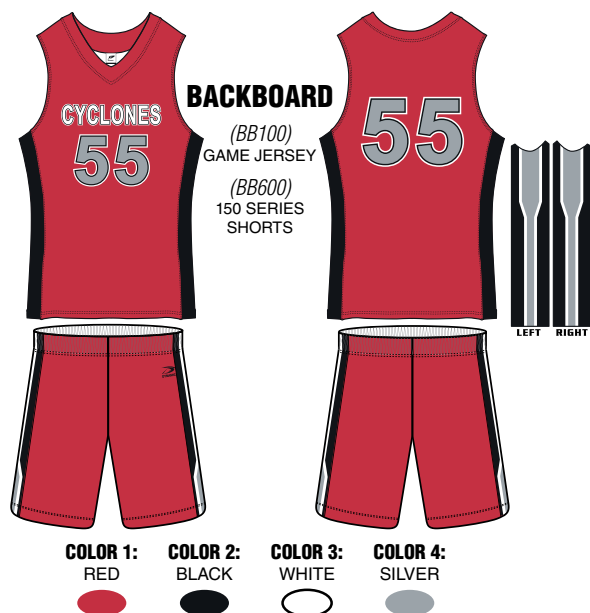
COLOR 1: ORANGE
COLOR 2: ROYAL
COLOR 3: OLD
COLOR 4: WHITE



NAMES
55



LEFT RIGHT







ALLEY OOP

(BB400)
400 SERIES
JERSEY
(BB604)
FULL CUT
SHORTS



COLOR 1:
WHITE



COLOR 2:
GOLD



COLOR 3:
BLACK



BLOCKER

(BB400)
400 SERIES
JERSEY
(BB604)
FULL CUT
SHORTS



COLOR 1:
LIME



COLOR 2:
BLACK



BREAKER

(BB400)
400 SERIES
JERSEY
(BB604)
FULL CUT
SHORTS



COLOR 1:
FOREST



COLOR 2:
WHITE



COLOR 3:
BLACK



CARRY

(BB400)
400 SERIES
JERSEY
(BB604)
FULL CUT
SHORTS



COLOR 1:
GOLD



COLOR 2:
FOREST



GUARD

(BB400)
400 SERIES
JERSEY
(BB604)
FULL CUT
SHORTS



COLOR 1:
RED



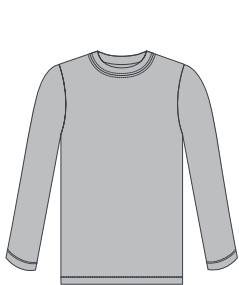
COLOR 2:
NAVY



COLOR 3:
WHITE

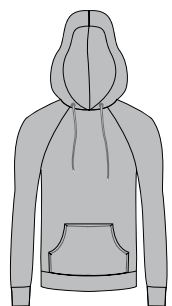


SUGGESTED ADD-ONS



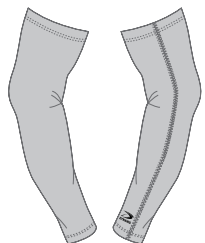
SHOOTER SHIRT

Performance fit shirt, available in short or long sleeve and crew or v-neck.



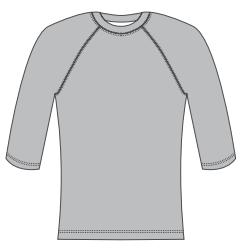
PULL OVER HOODIE

Fully lined hood. Raglan sleeves with cuffs. Pouch pocket. Available in light & medium weight fleece.



COMPRESSION SLEEVE

Bicep to wrist length. Made of light weight, breathable, moisture wicking fabric.



BASE LAYER

Made of light weight, breathable, moisture wicking fabric. Available in multiple sleeve lengths.



20
19



TEL: 1.800.437.6223 / EMAIL: INFO@DYNAMICTEAMSPORTS.COM / DYNAMICTEAMSPORTS.COM

